

Boston College



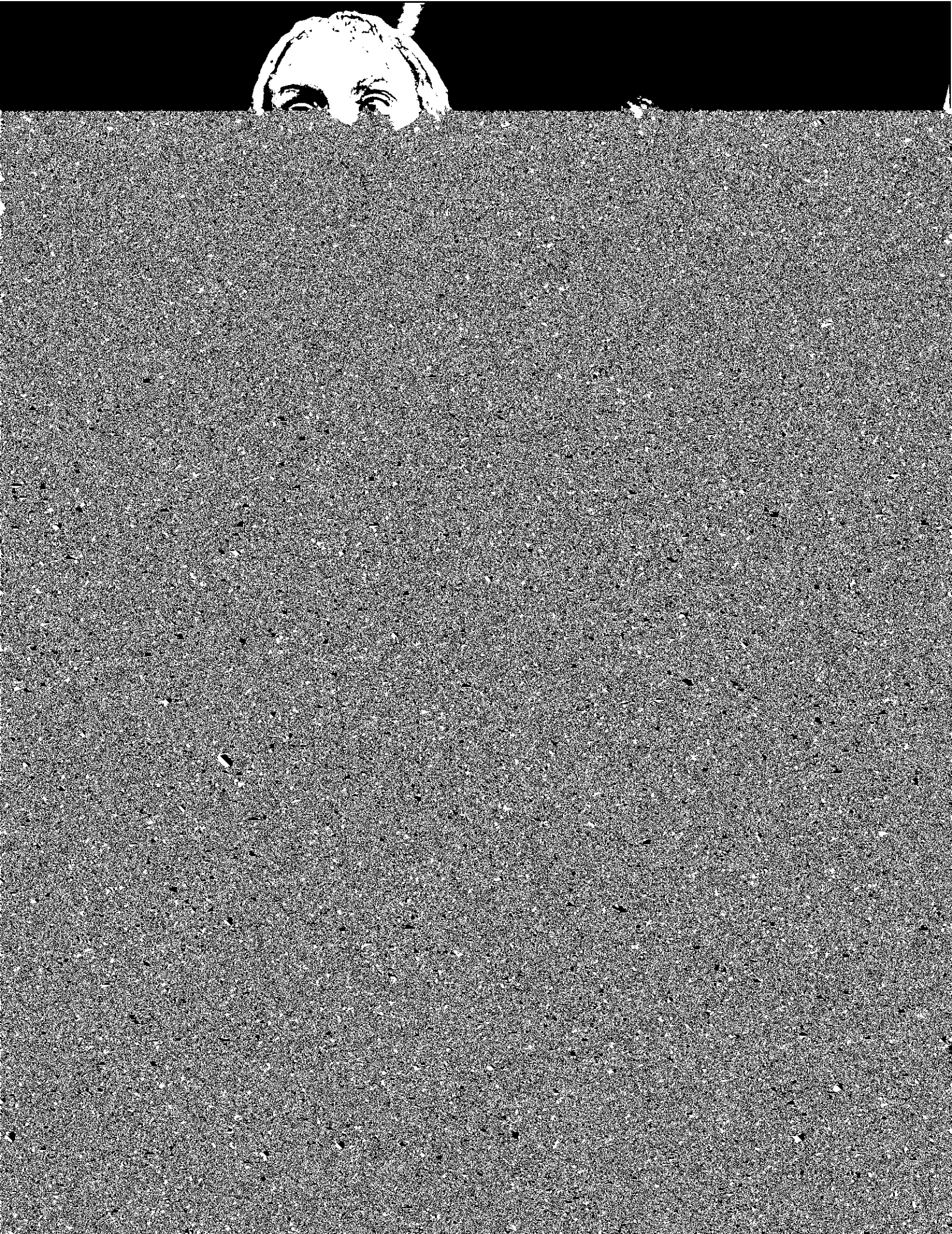
Contents

Table of Contents

	Page
Foreword	1
Boston College — A Brief History	3
Boston College Profile	5
Administration and Faculty	
Trustees of Boston College, December, 1972 — September, 1987	8
Chart of Administration	8
Board of Trustee Membership	9
Board of Trustee Chairmen	9
Trustee A	10
Trustee B	10
Trustee C	10
Trustee D	10
Trustee E	10
Trustee F	10
Trustee G	10
Trustee H	10
Trustee I	10
Trustee J	10
Trustee K	10
Trustee L	10
Trustee M	10
Trustee N	10
Trustee O	10
Trustee P	10
Trustee Q	10
Trustee R	10
Trustee S	10
Trustee T	10
Trustee U	10
Trustee V	10
Trustee W	10
Trustee X	10
Trustee Y	10
Trustee Z	10
Academic Deans	12
Department Chairmen and Chairwomen	12
University Administrators	13
Professional Administrative and Support Staff Personnel	14
Faculty	15
by School and Rank	15
Full-Time Equivalent by School	15
by School and Tenure Status	16
by Rank and Sex	16
by Highest Earned Degree and Rank	17
by Highest Earned Degree and Sex	17
by Rank and Sex	17
by Rank and Sex	17
Full-Time Faculty, Teaching Assistants, Teaching Fellows	18
by School and Department	18
Average Faculty Compensation	19
by Rank, AAUP Category I, 1985-1986	19
by Rank, AAUP Category II, 1985-1986	19
Boston College Faculty For the Ten Years Ended May 31, 1986	19
Students	
Freshmen Enrollment by Year and Sex (Full-Time)	22
Freshmen Enrollees - SAT Averages by Class	22
Freshmen Applications, Admittances and Enrollment (Full-Time)	23
by Geographic Distribution	23
Undergraduate Applications, Admittances and Enrollment (Full-Time)	24
by TYPE of PREVIOUS INSTRUCTION and Sex	24
Enrollment	25
Undergraduate, Day and Evening and Graduate	25
Undergraduate by School	26
Graduates by School	26
Graduate by Degree Program and Discipline	27
Undergraduate and Graduate by Sex	28

	Page
Summer Session	29
Evening College	30
Geographic Distribution of Students	31
International Students and Scholars, 1985-1986:	
by School	32
by Class of Program	32
by Sex and Program	32
by Country	33
by Country	33
Minority Enrollment	34
Veteran Enrollment	34
Undergraduate Degrees Conferred:	
by Degree and Number of Majors	35
by Degree	36
by School and by Major	37
Undergraduate and Graduate Degrees Conferred by Degree and Sex	38
Undergraduate and Graduate Financial Aid:	
Dollars	39
Number of Awards	39
Health Services	40
University Counseling Services:	
Number of Students, Faculty-Staff Served	41
Services Provided to Undergraduate and Graduate Students	41
Alumni	
Boston College Alumni Clubs	44
Alumni Association Board of Directors, 1986-1987	44
Alumni Awards	44
Comparative Regional Analysis	45
Geographic Analysis by State	45
Living Alumni by Primary School, Sex and Class	46
Alumni Donors by Primary School and Class	m [(.)5ol

Administration & Faculty

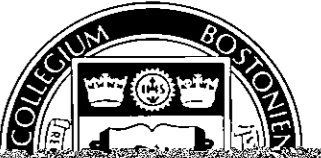


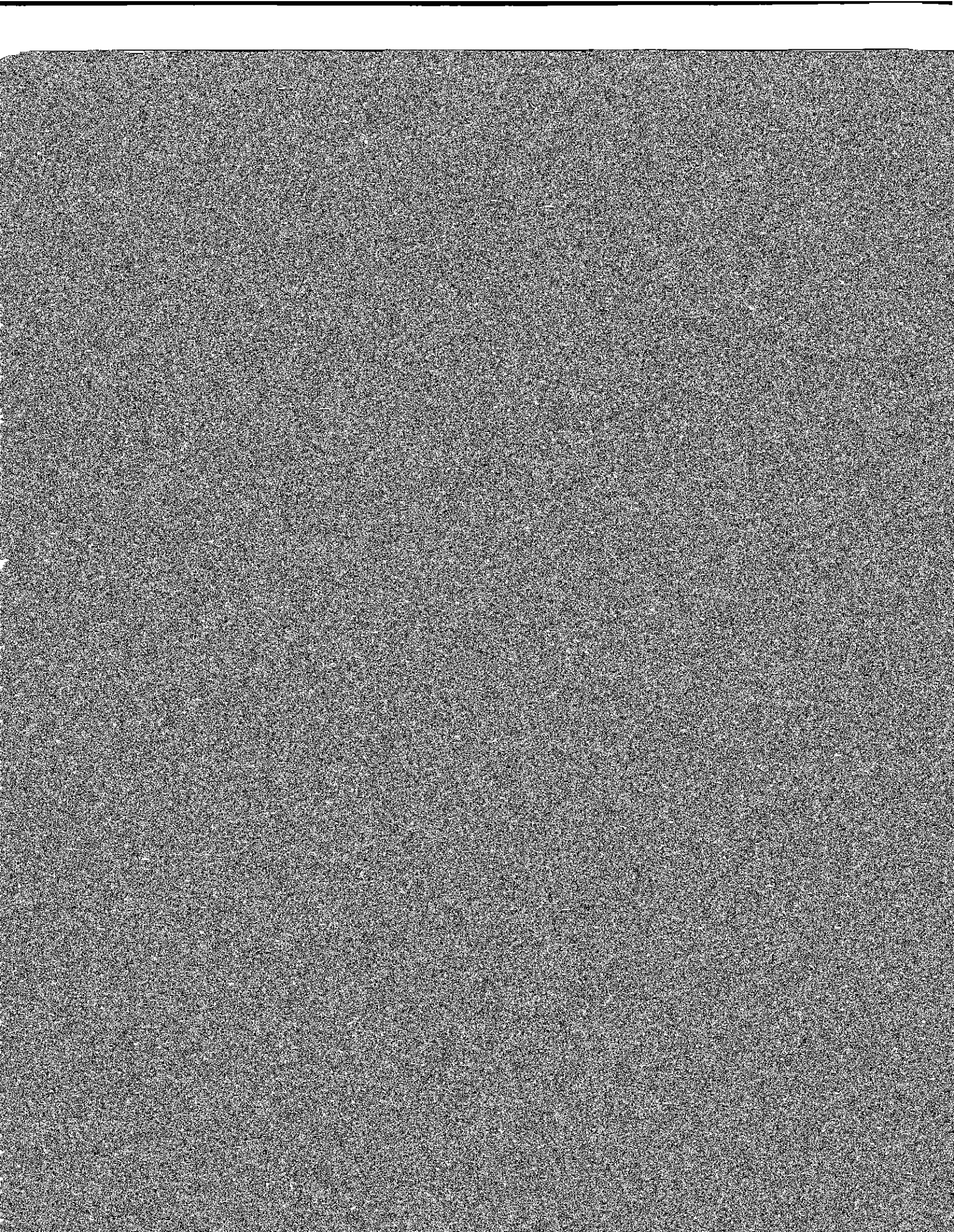
Board
of
Trustees

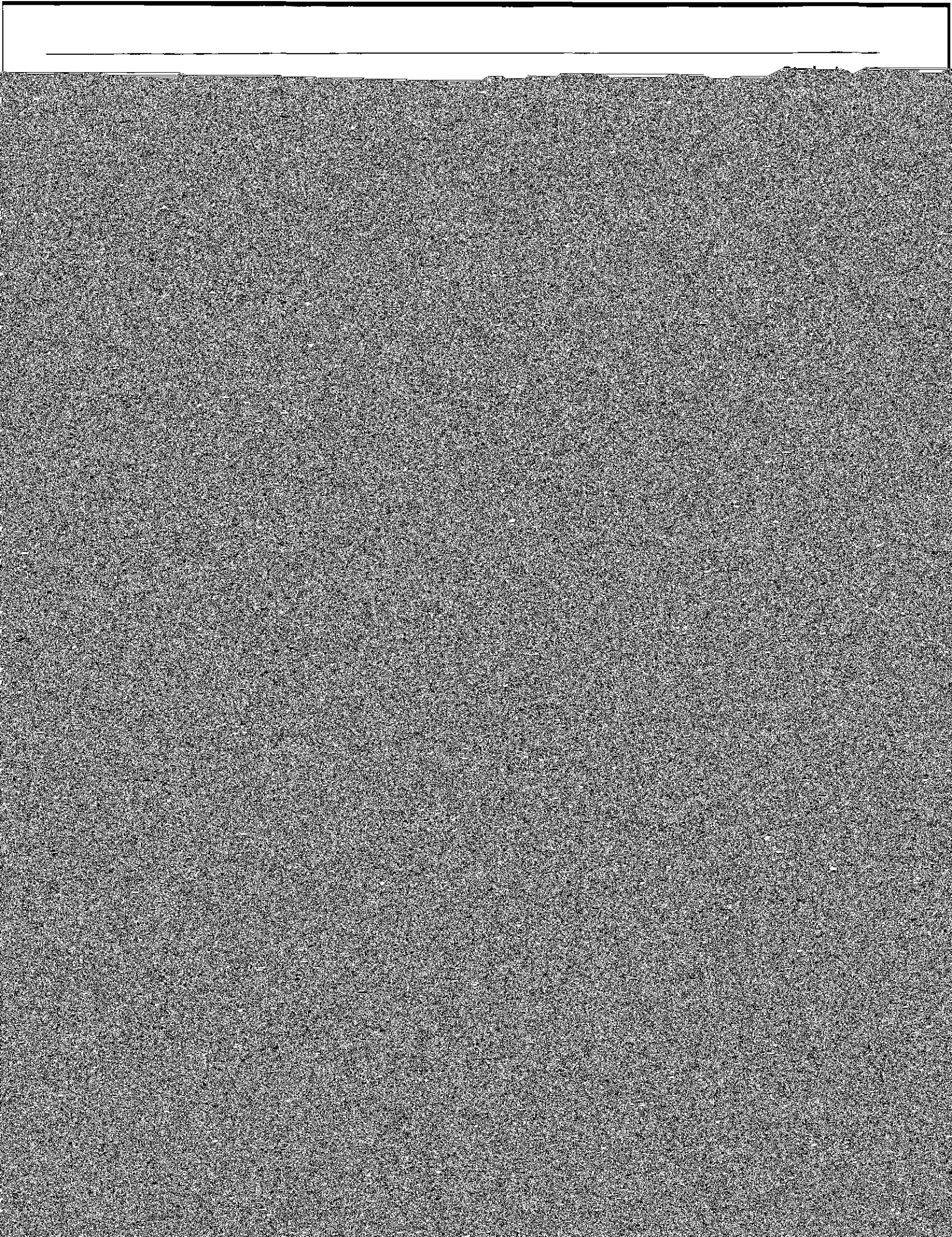
President
J.D. Monan, S.J.

University

University





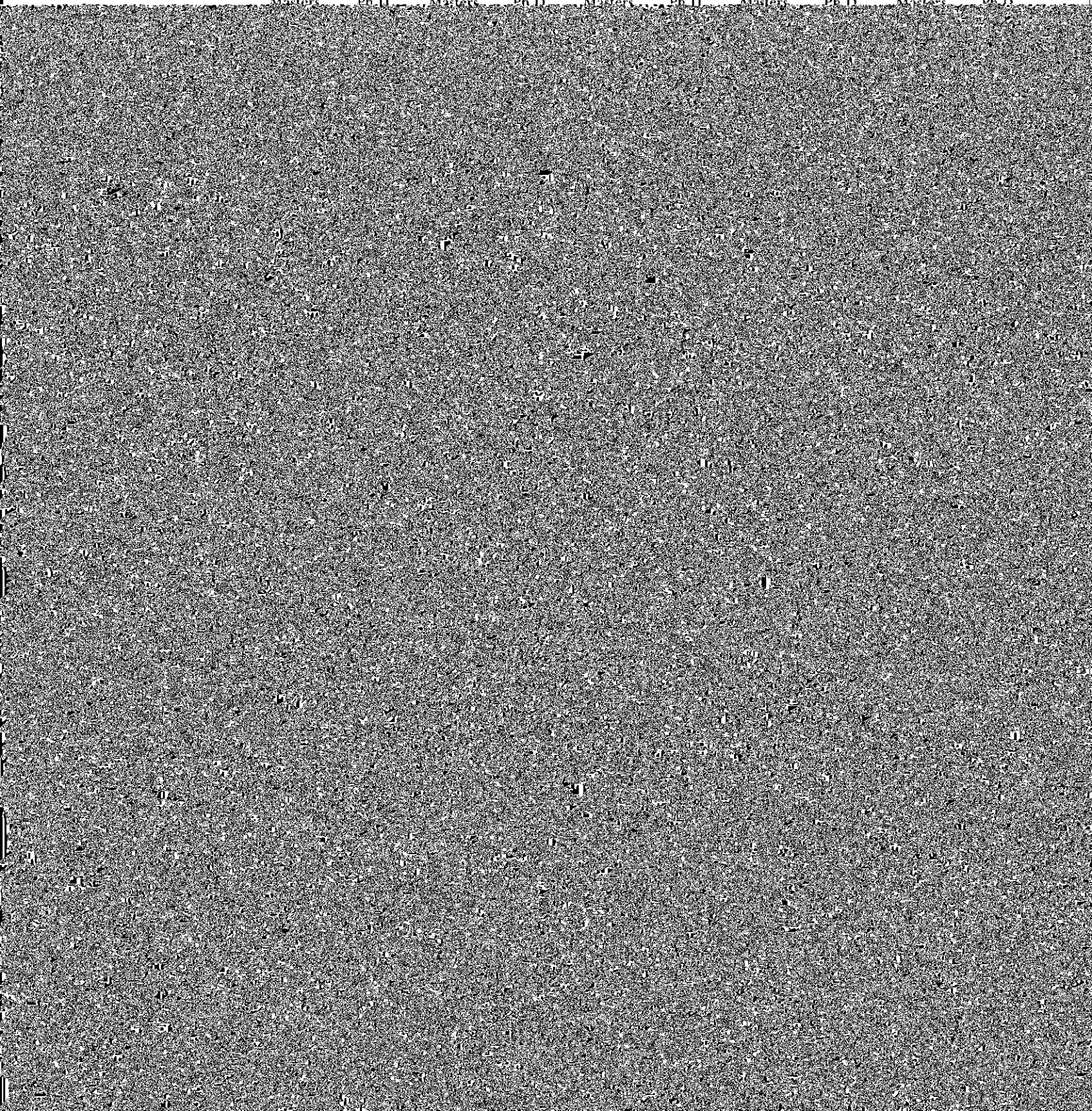


**Undergraduate Enrollment
By School**

Year	A&S	SOM	Education	Nursing	Evening	Total
1977-78	5,013	2,010	926	756	1,582	10,287
1978-79	4,826	2,076	812	769	1,702	10,185
1979-80	4,839	2,159	753	723	1,848	10,322
1980-81	5,022	2,261	765	681	2,038	10,767
1981-82	5,024	2,191	728	646	2,058	10,647
1982-83	5,049	2,203	641	623	2,013	10,529

Graduate Enrollment*
 By Degree Program and Discipline, Full- and Part-Time

1981-82		1982-83		1983-84		1984-85		1985-86	
Masters	Ph.D.	Masters	Ph.D.	Masters	Ph.D.	Masters	Ph.D.	Masters	Ph.D.

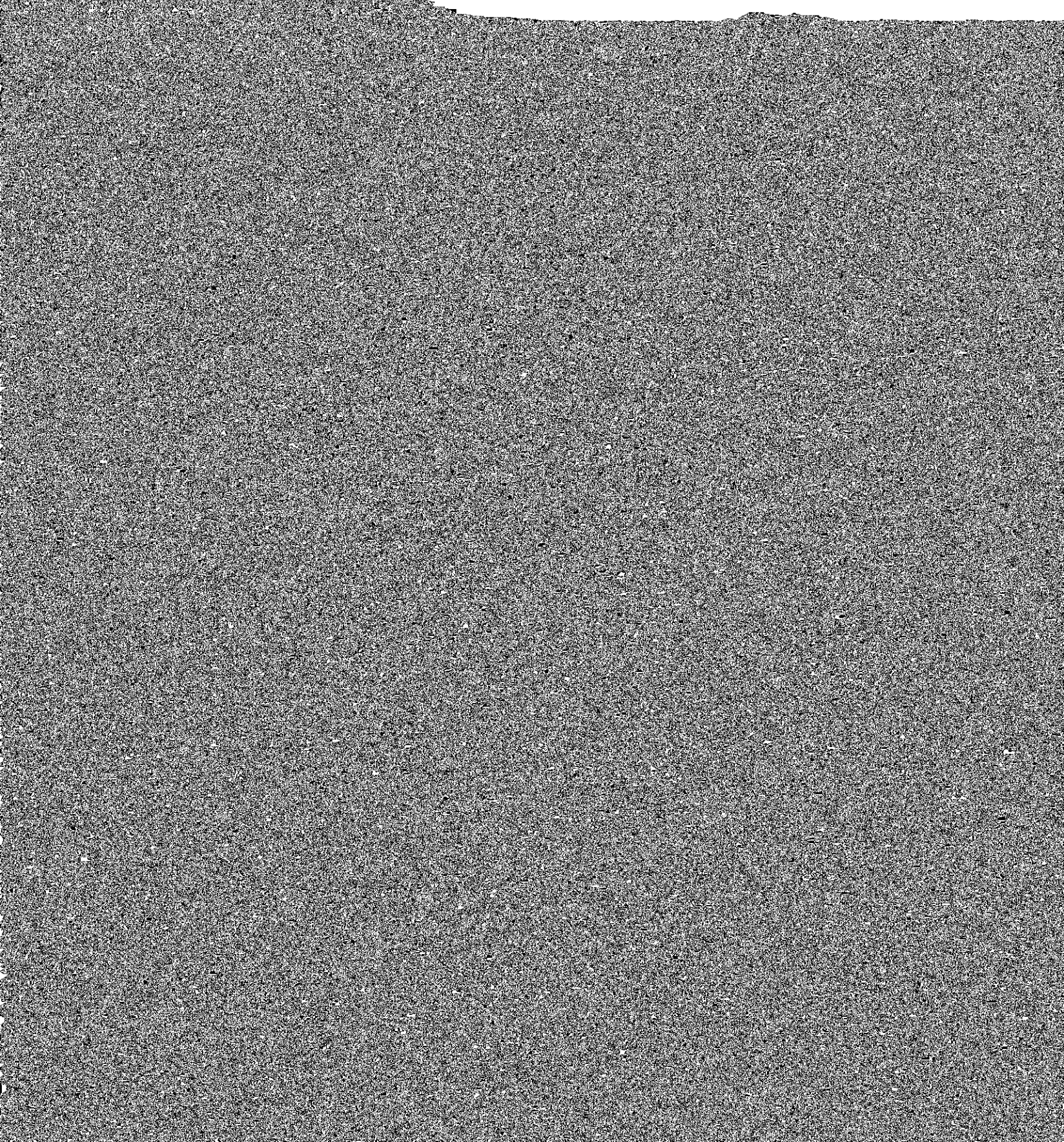


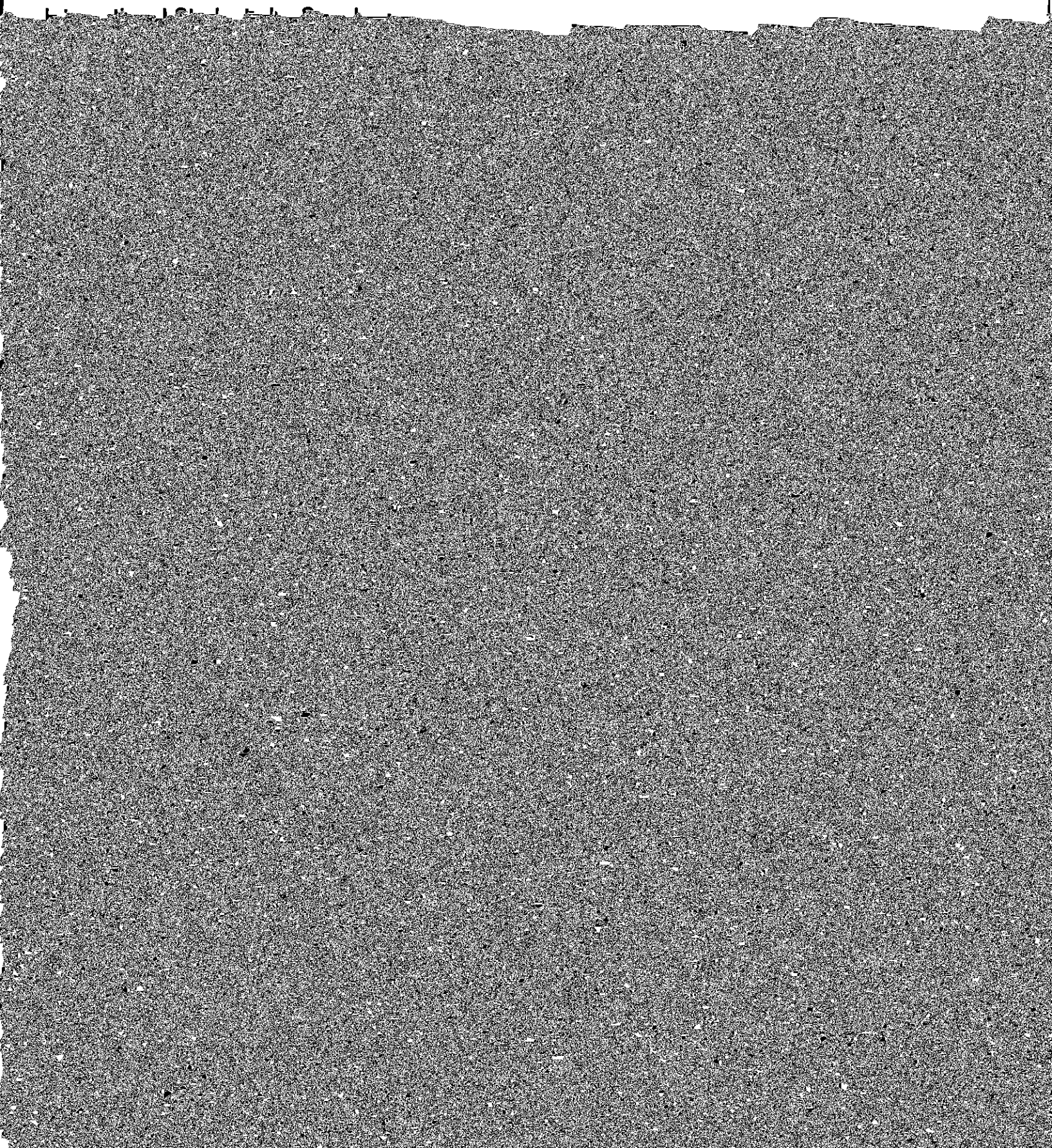
Undergraduate and Graduate Enrollment By Sex

Total Enrollment	Year	Undergraduate		Graduate Professional		Total	
		Men	Women	Men	Women	Men	Women
4,850	1977-78	1,802	1,879	6,652	7,316	13,968	
4,625	1978-79	1,783	1,945	6,408	7,505	13,913	
4,556	1979-80	1,701	1,954	6,257	7,720	13,977	
4,703	1980-81	1,642	2,036	6,245	8,200	14,445	
4,471	1981-82	1,542	1,977	6,013	8,153	14,166	1981-82
4,059	1982-83	1,482	1,577	5,288	5,240	10,528	
4,059	1983-84	4,418	6,086	5,377	1,978	5,998	
2,068	1984-85	8,133	14,210	4,315	6,058	15,599	
2,194	1985-86	6,127	8,349	4,477	6,155	11,650	
4,316	1986-87	5,915	11,562	9,200	8,878	13,998	

Source: Registrar

Everine College Enrollment

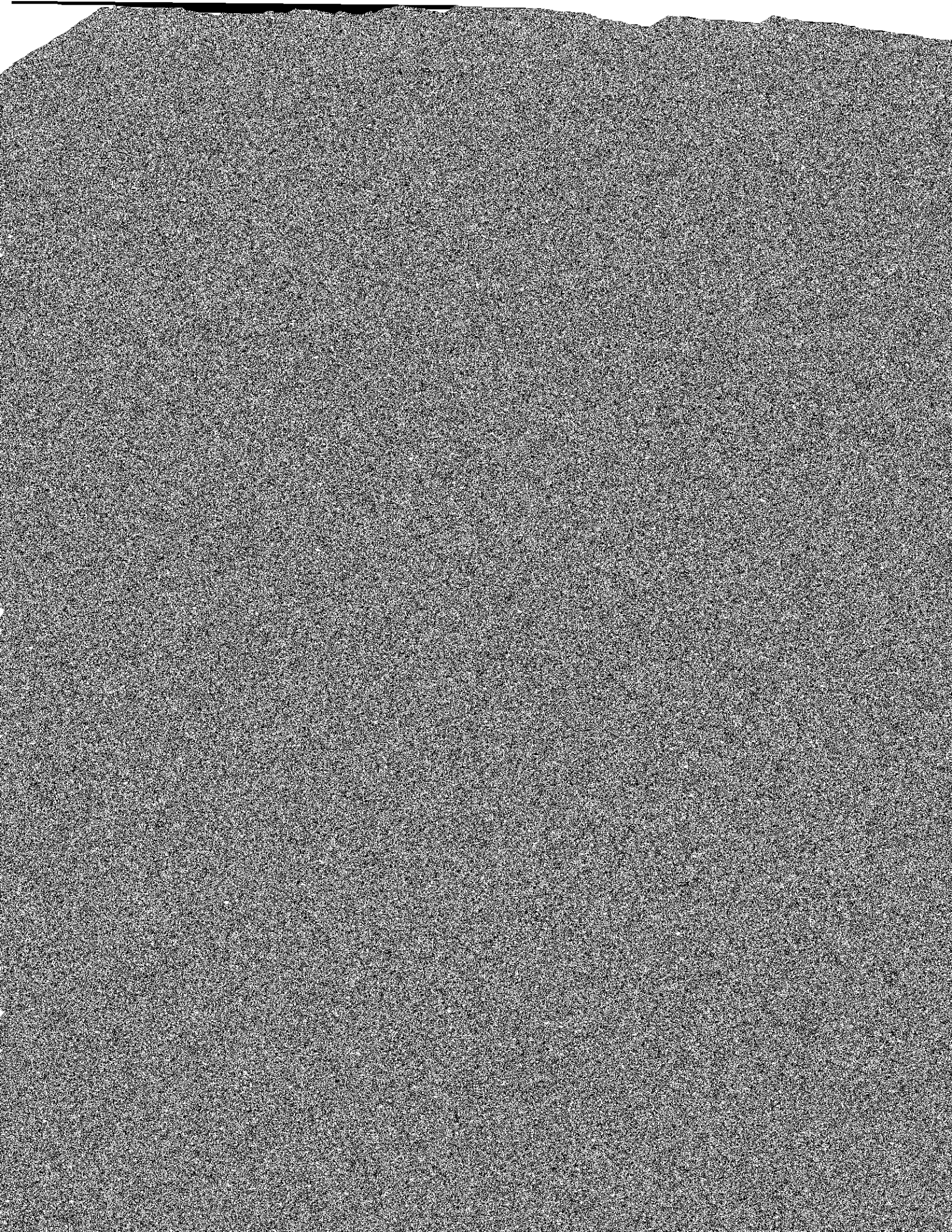


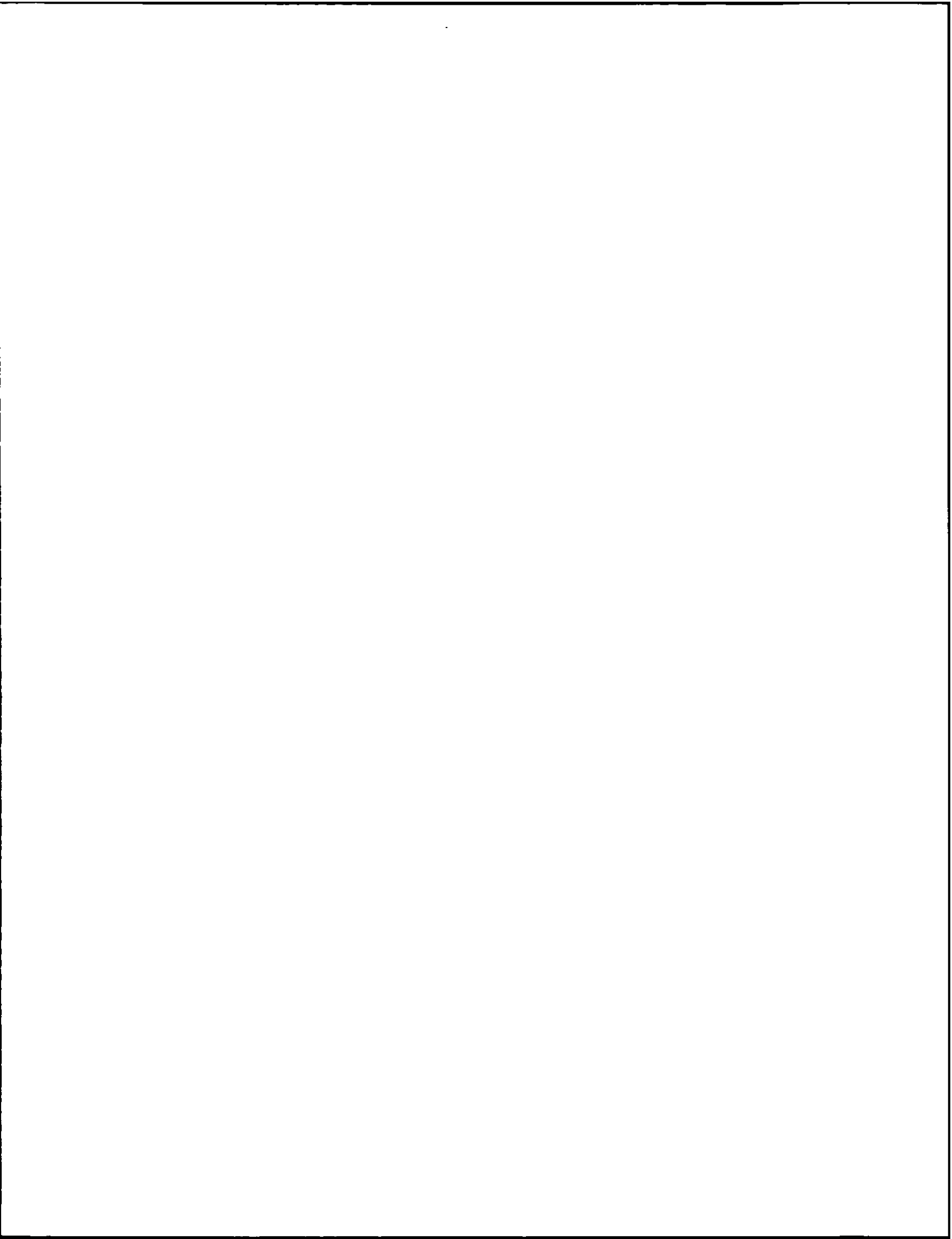


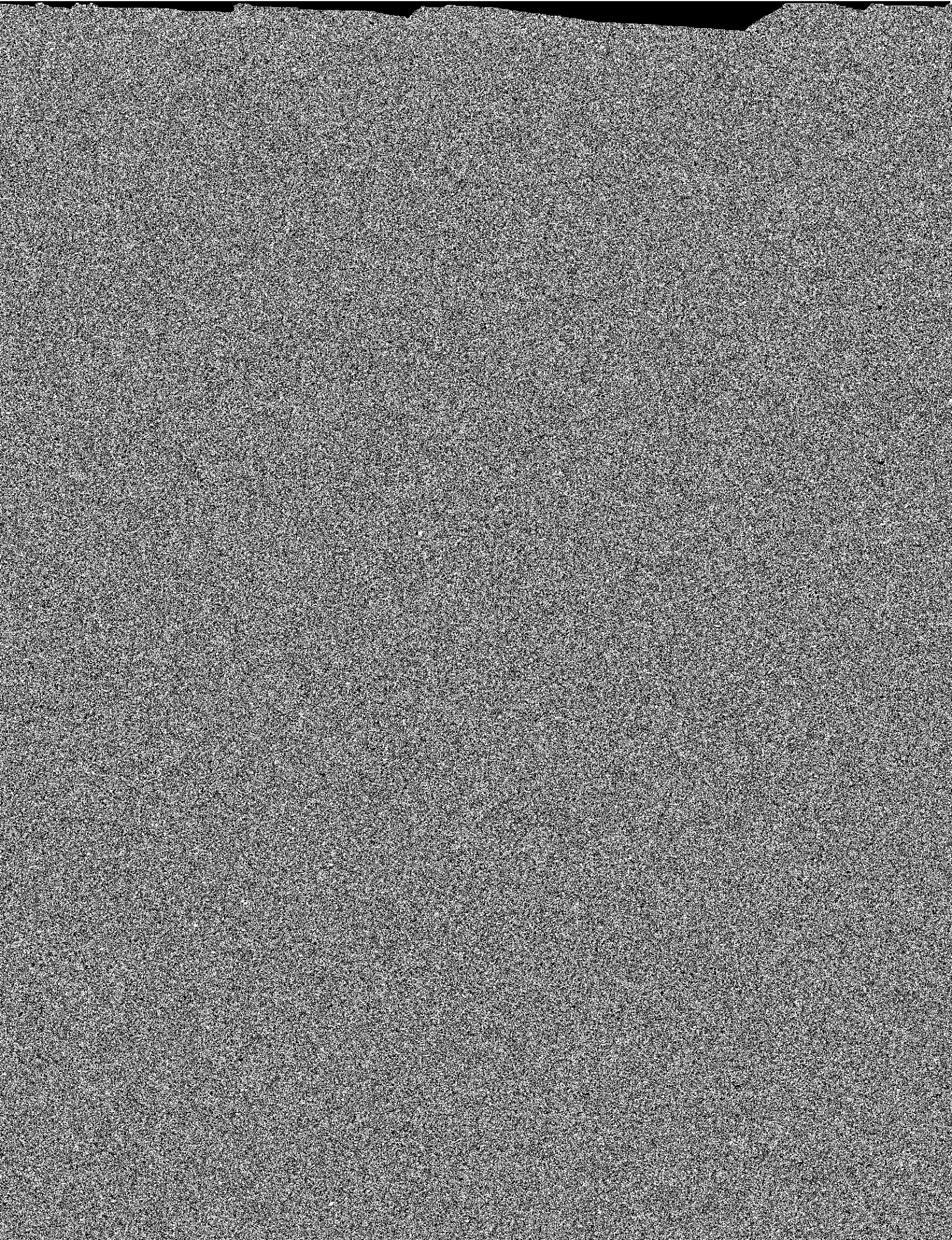
Health Services

Number of Students Served

	1981-82	1982-83	1983-84	1984-85	1985-86
Grand Totals					
Total Visits to M.D.	20,048	19,506	19,840	17,474	19,108







Facility Capacities

Fall 1986

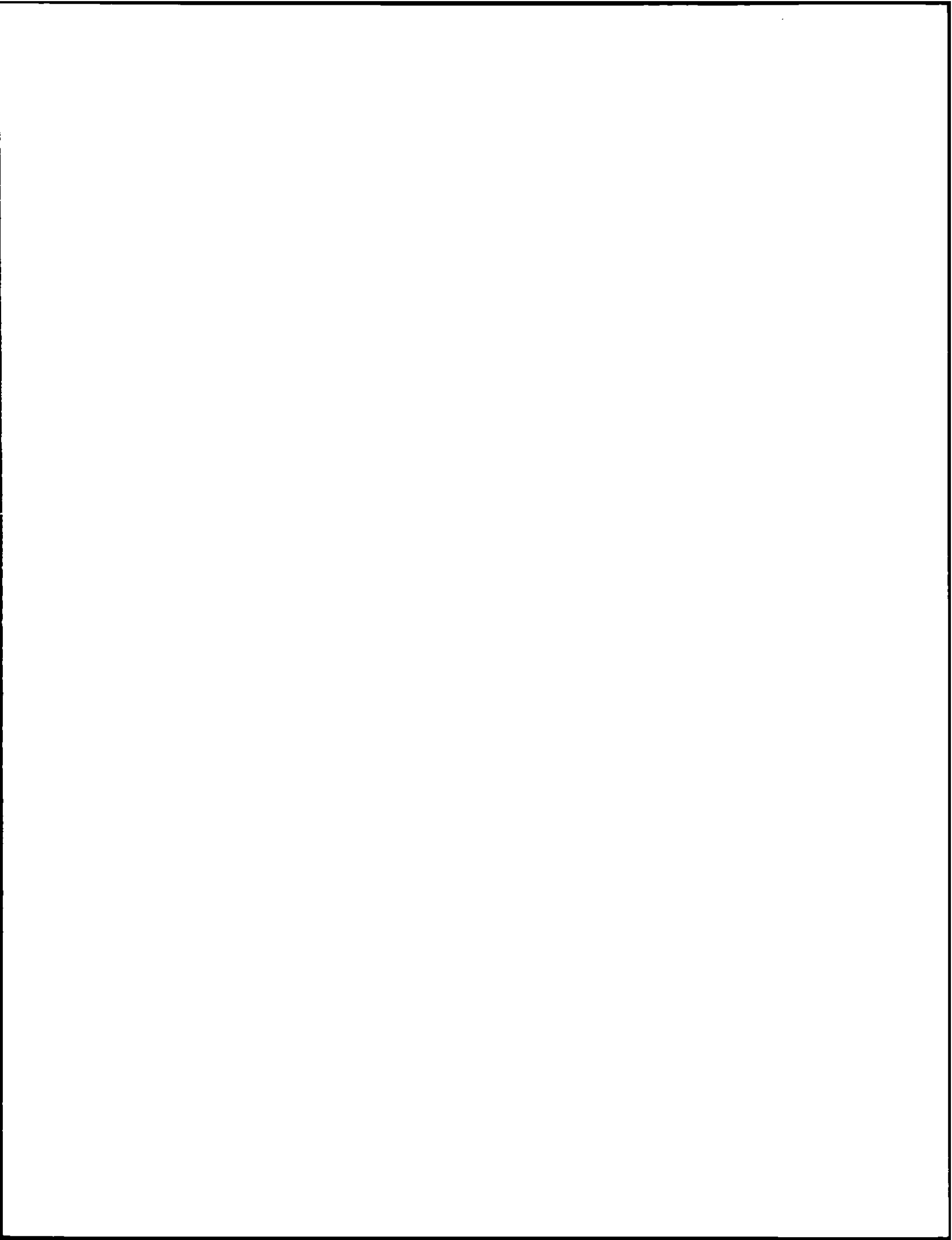
Facility	Location	Lecture Seating	Dinner Seating	Reception/ Standing
Athletics				
Alumni Stadium:	Lower Campus			
Sporting Events		32,000	—	—
Field Seating		3,000	—	—
William J. Flynn Student Recreation Complex	Lower Campus	4,000	2,500	4,000
Roberts Center:	Middle Campus			
Sporting Events		4,000	—	—

Classrooms
Fall 1986

Building	Number of Classrooms	Stations
Barry	5	470
Campion	13	651
Carney	25	1,107
Cushing	11	818

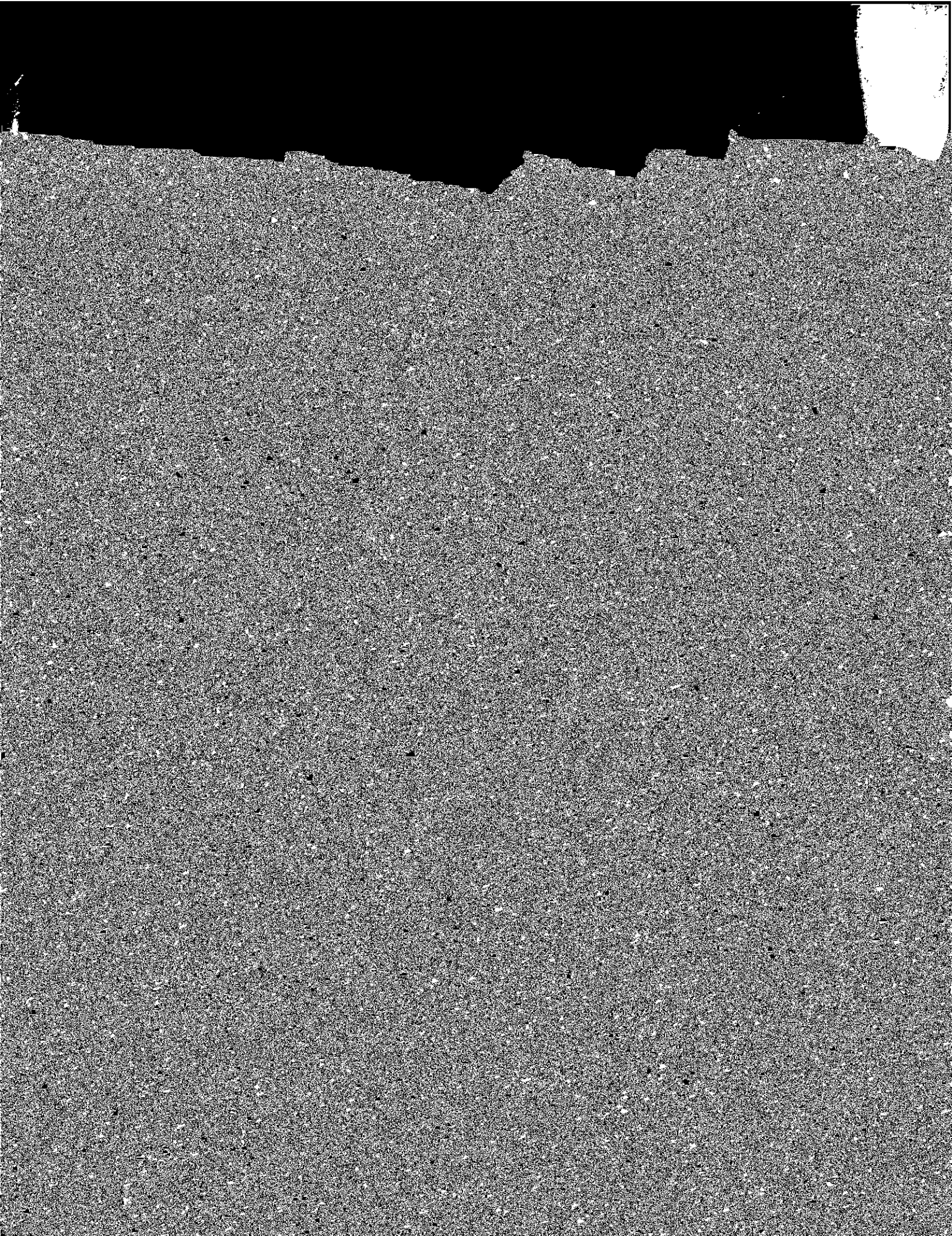
Summary of Building Use
Fall 1986

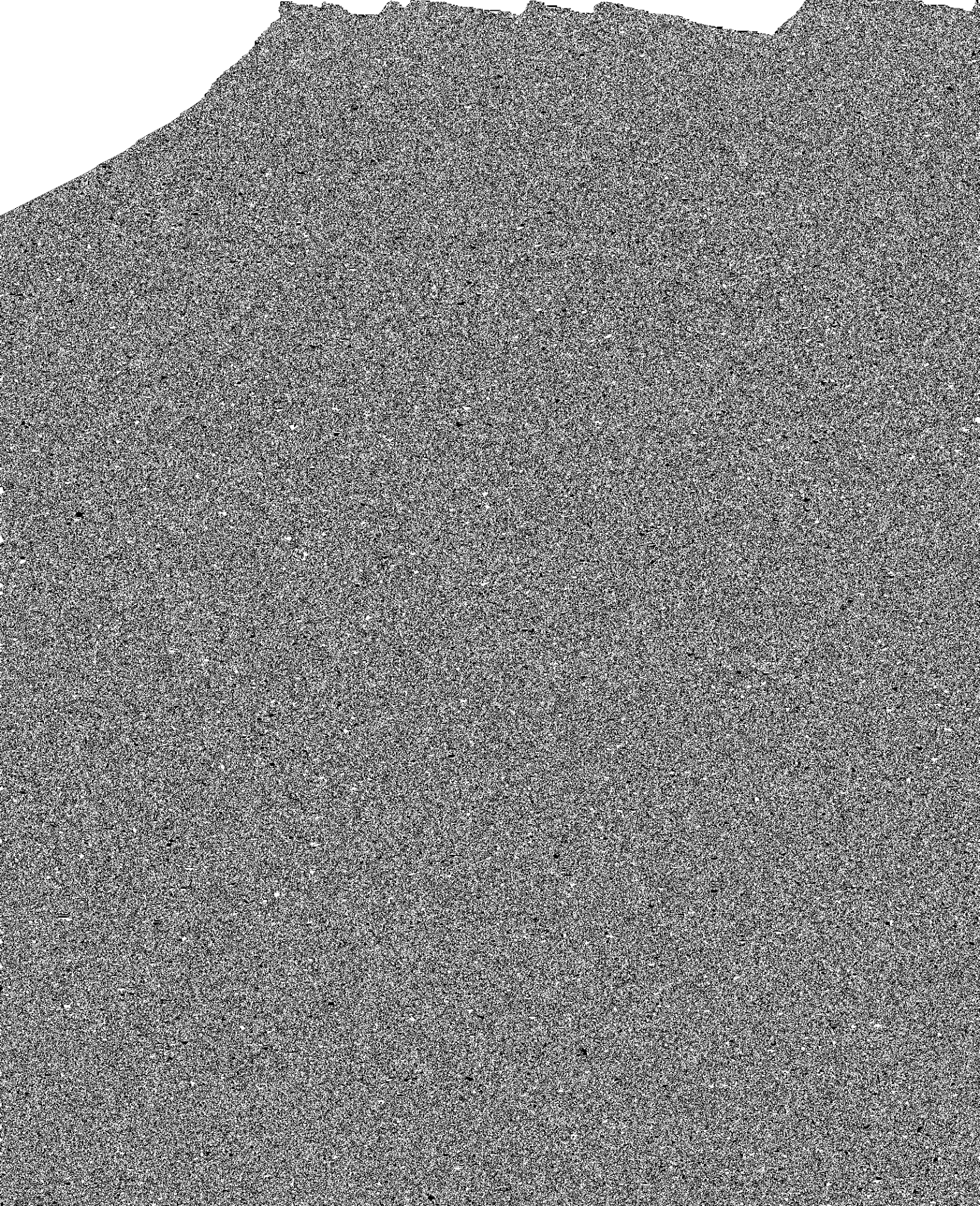
Building Use	Number of Buildings
Student Residences ¹	24
Administrative	13
Academic and Administrative ²	20
Jesuit Residence	5



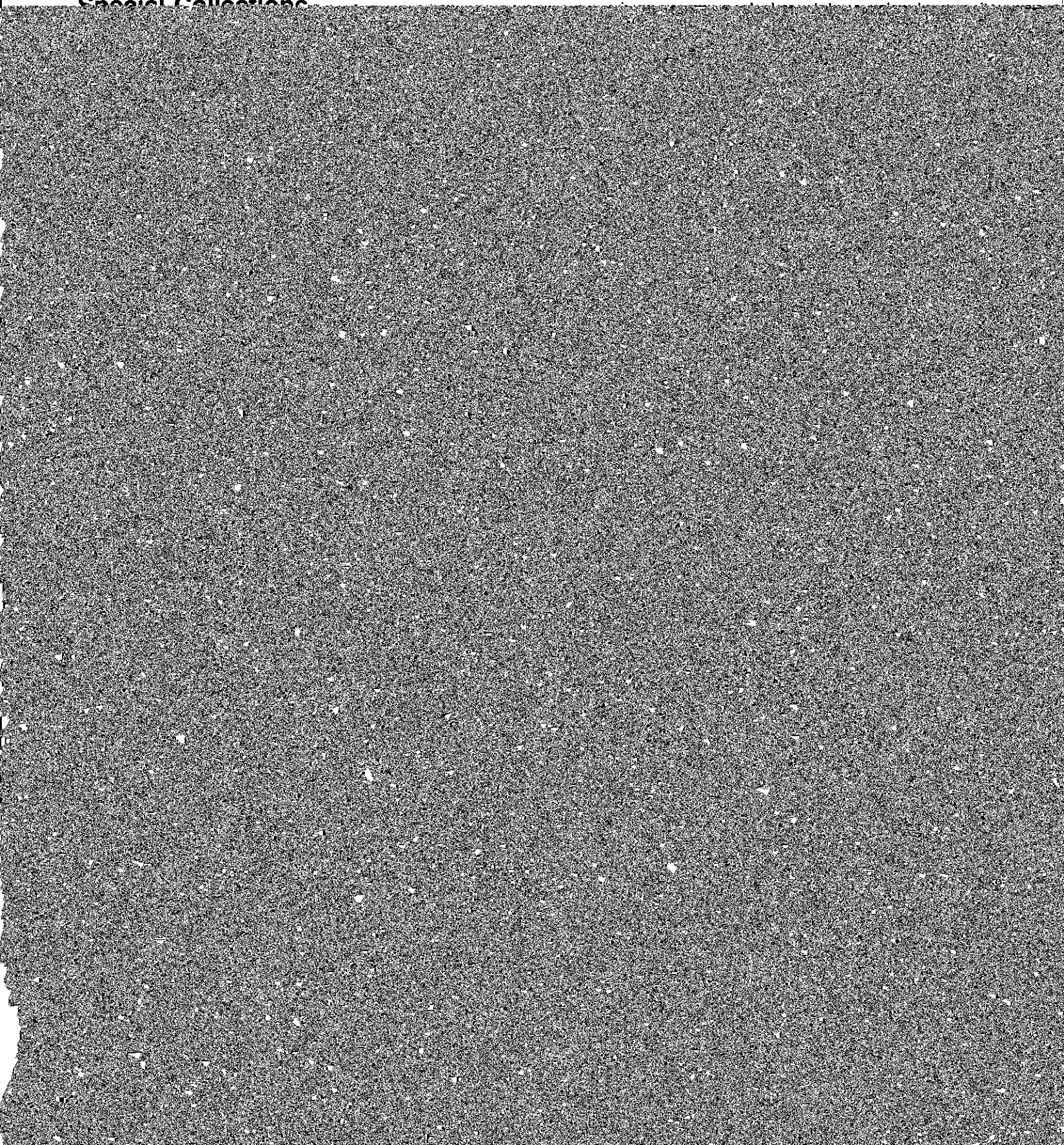
Libraries

1. *Journal of the American Library Association*, 1978, 29(1), 1-10.





Special Collections



Association Memberships*

New England Educational Research Organization
North American Association of Summer Sessions

