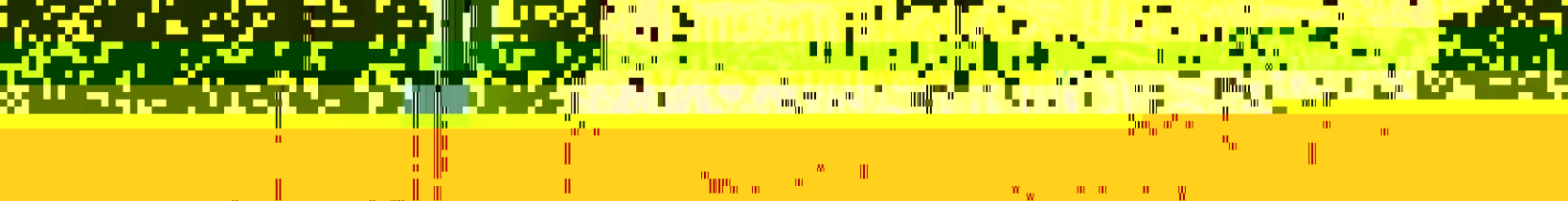
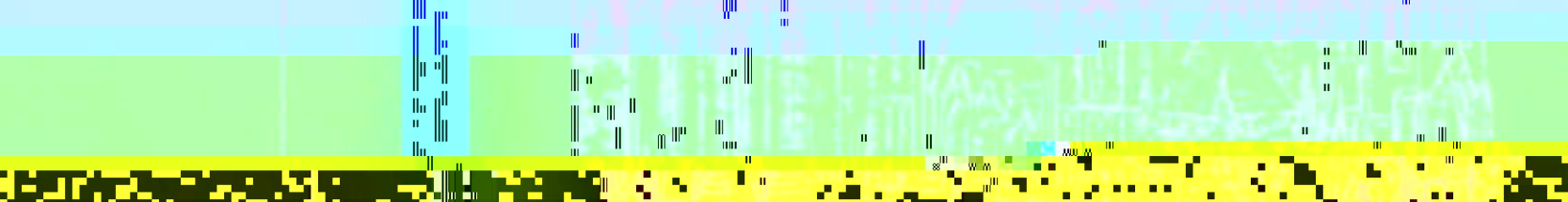
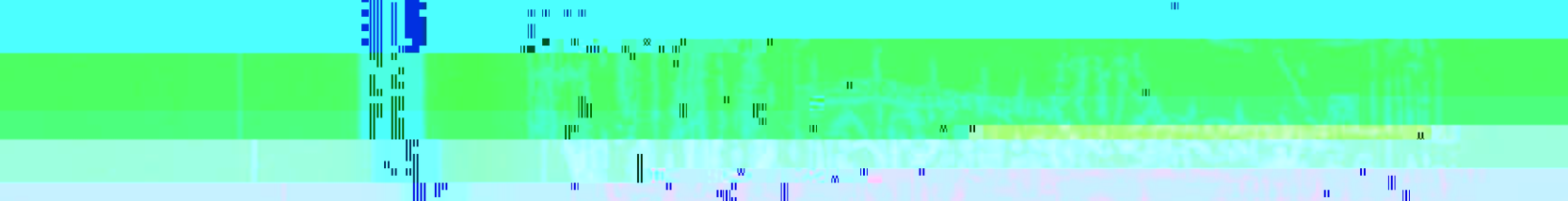
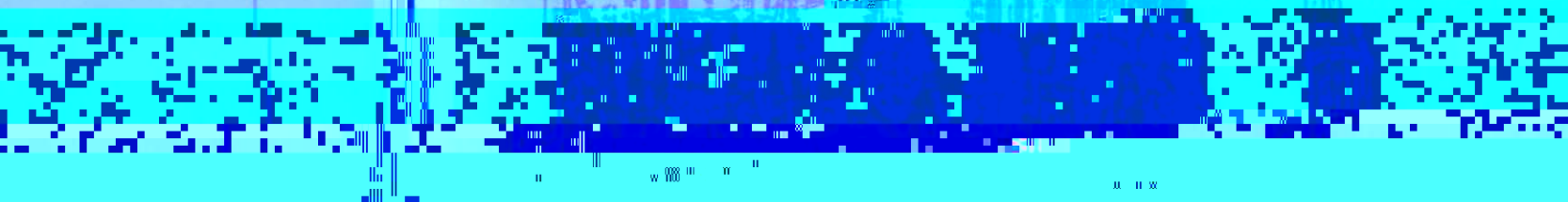
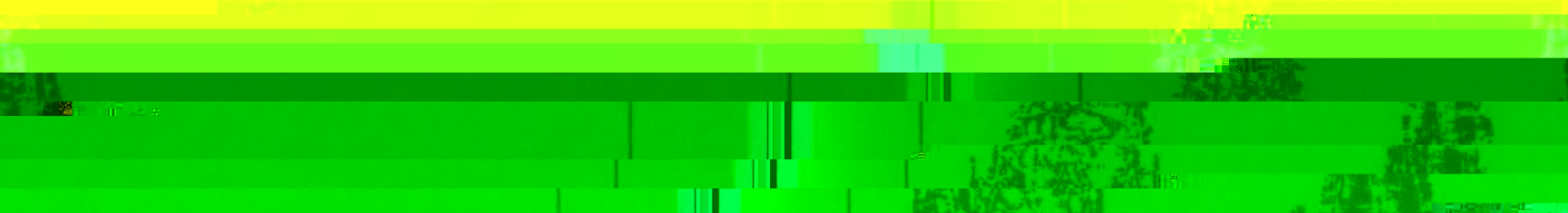


W. Bush 57
12/14/81

Boston College

FACT BOOK 1980 - 1981



[REDACTED]

Undergraduate Degrees Conferred:

by Degree and Number of Majors

- by Major
- by School and by Major

Undergraduate and Graduate Degrees Conferred, by Degree and School

Undergraduate
Number
of Degrees

ALUMNI

Boston College

27

28
29

30

31

32

33

36

37

38

40
42

Living Alumni by Primary School, Sex and Class

Alumni Honors by Primary School and Class

New Heights Advancement Campaign

Individual Donors: Giving Club

NEW PHYSICAL PLANT

Map - Newton Campus

Map - Westover Annex

Boston College Properties

Map - Boston College Properties

Map - Boston College Properties

Map - Boston College Properties

Map - Boston College Properties

Map - Boston College Properties

Map - Boston College Properties

Map - Boston College Properties

Map - Boston College Properties

Map - Boston College Properties

Map - Boston College Properties

Map - Boston College Properties

Map - Boston College Properties

Map - Boston College Properties

Map - Boston College Properties

Map - Boston College Properties

Map - Boston College Properties

Map - Boston College Properties

Map - Boston College Properties

Map - Boston College Properties

Map - Boston College Properties

Map - Boston College Properties

Map - Boston College Properties

Map - Boston College Properties

Map - Boston College Properties

Map - Boston College Properties

Map - Boston College Properties

Map - Boston College Properties

Map - Boston College Properties

Map - Boston College Properties

Map - Boston College Properties

Map - Boston College Properties

Map - Boston College Properties

V. FINANCE

Highlights of Financial Operations

H.E.F.A. Bond Issues

tuition Restated in 1967 Dollars

Contracts and Grants - Source and Appropriation - 1980-81

Contracts and Grants - Source and Appropriation - 1980-81

Contracts and Grants - Source and Appropriation - 1980-81

Contracts and Grants - Source and Appropriation - 1980-81

Contracts and Grants - Source and Appropriation - 1980-81

Contracts and Grants - Source and Appropriation - 1980-81

Contracts and Grants - Source and Appropriation - 1980-81

Contracts and Grants - Source and Appropriation - 1980-81

Contracts and Grants - Source and Appropriation - 1980-81

Contracts and Grants - Source and Appropriation - 1980-81

Contracts and Grants - Source and Appropriation - 1980-81

Contracts and Grants - Source and Appropriation - 1980-81

Contracts and Grants - Source and Appropriation - 1980-81

Contracts and Grants - Source and Appropriation - 1980-81

Contracts and Grants - Source and Appropriation - 1980-81

Contracts and Grants - Source and Appropriation - 1980-81

Contracts and Grants - Source and Appropriation - 1980-81

Contracts and Grants - Source and Appropriation - 1980-81

V. LIBRARIES

Libraries

Expenditures for Library Materials

Holdings by Individual Libraries

Circulation Statistics

Computer Searches

Special Collections

Special Collections

Special Collections

Special Collections

Special Collections

Special Collections

Special Collections

62

62

62

62

63

65

65

65

65

65

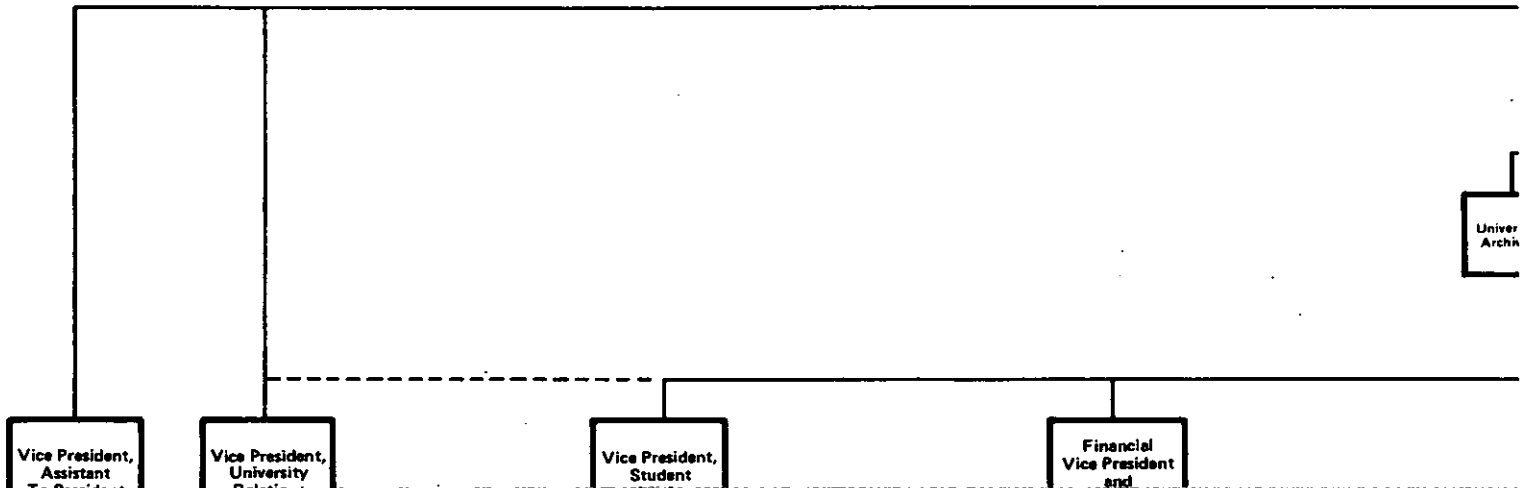
65

65

65

NOTES

Univer
Archh



Vice President,
Assistant

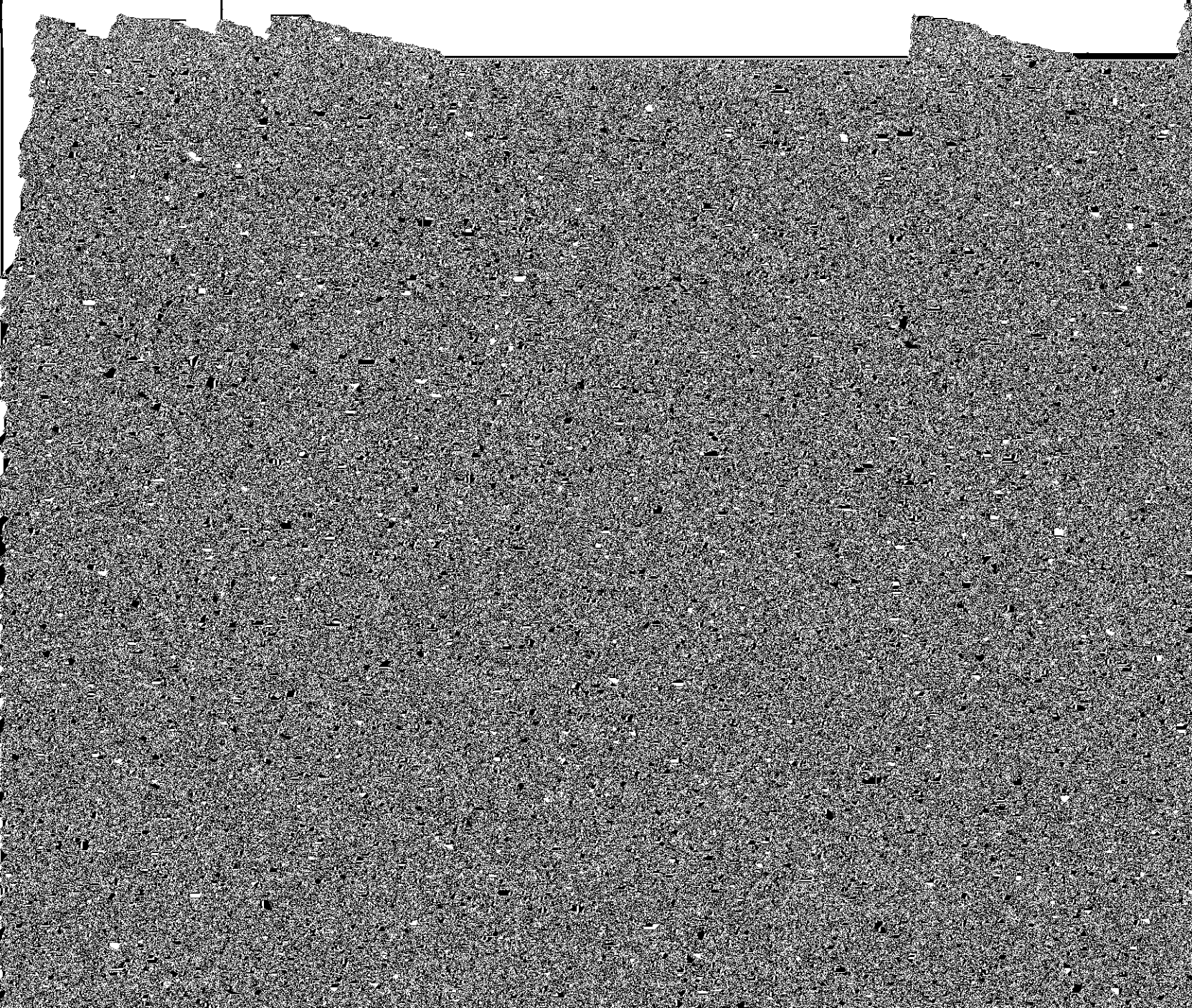
Vice President,
University

Vice President,
Student

Financial
Vice President
and

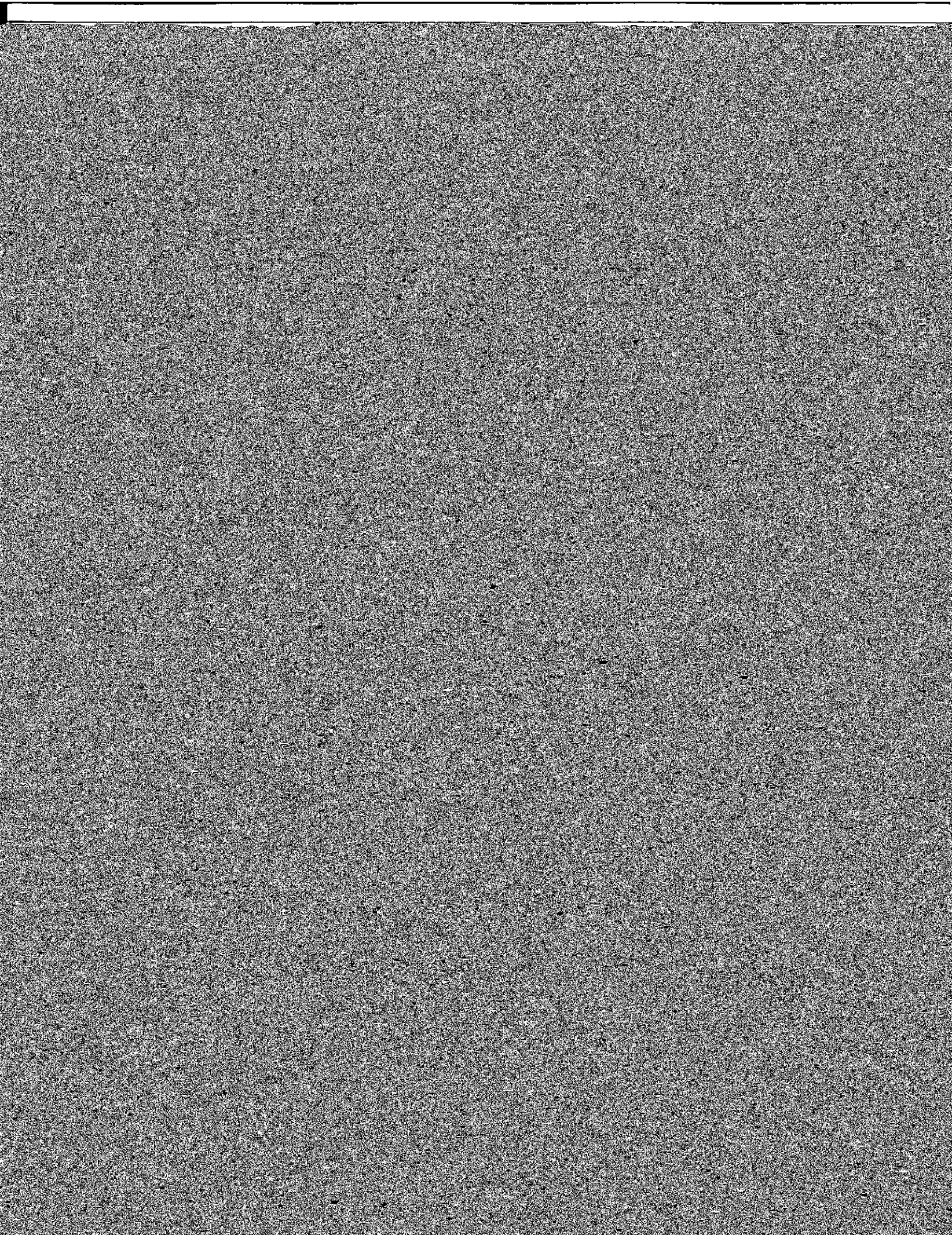
Board
of
Trustees

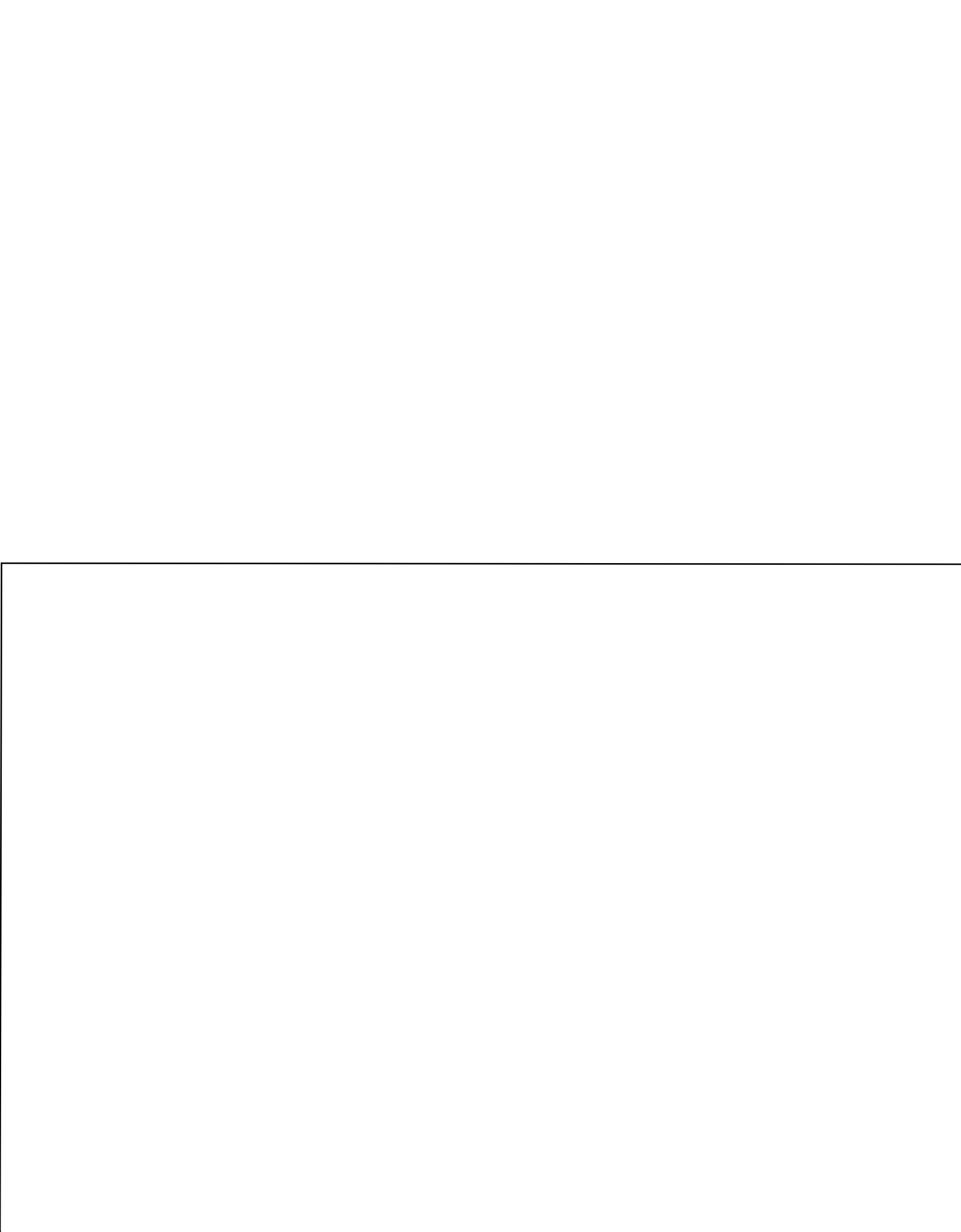
President



Daniel J. Shine, S.J. '44, M.A. '45
Rector of the Jesuit Community

Sandra J. Thomson, M.D., '58 (Newton College)
Department of Orthopaedic Surgery



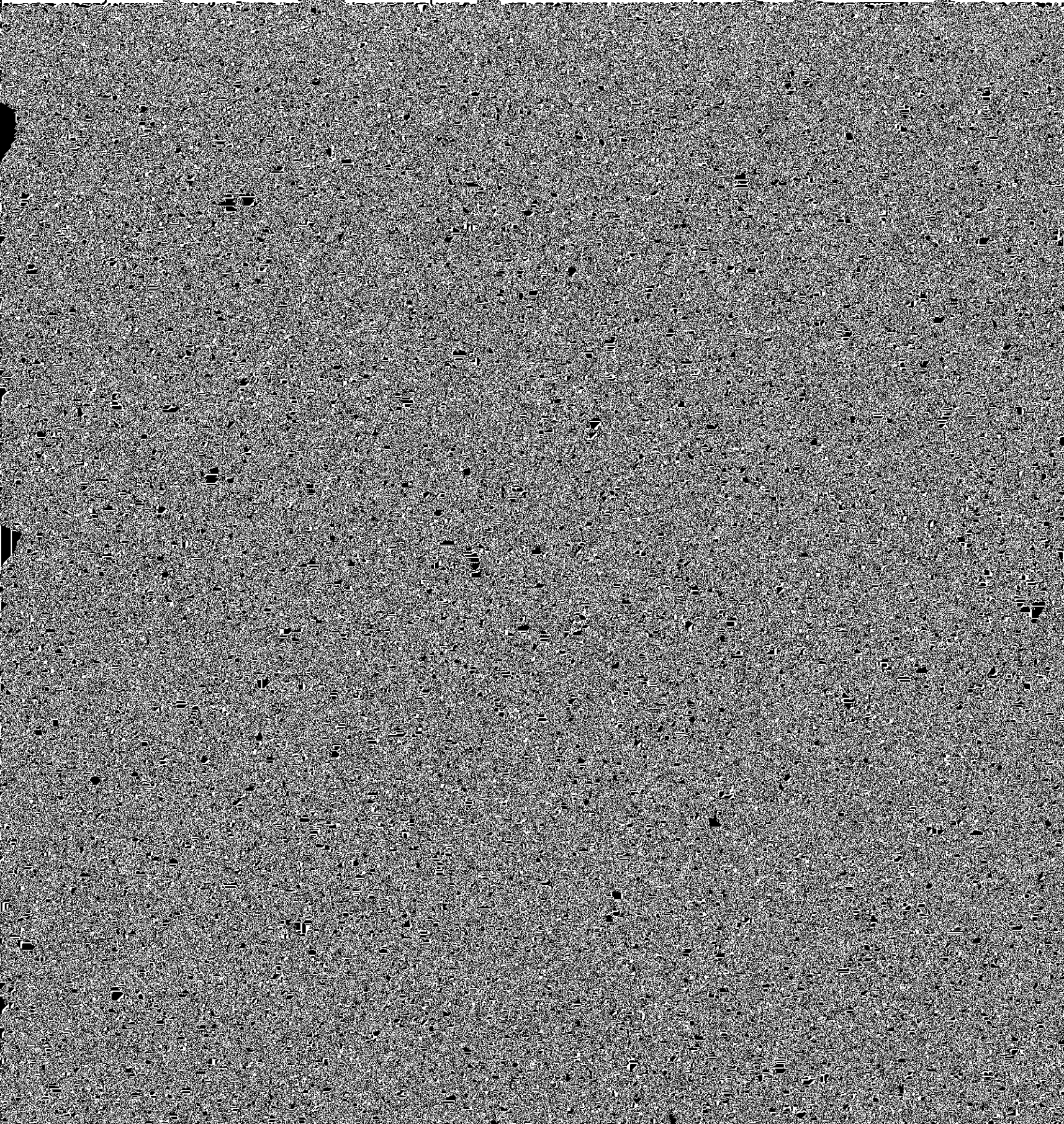


**FACULTY BY SCHOOL AND
TENURE STATUS
1980-81**

School	Tenured		Non-Tenured		Total	
	No.	% Faculty	No.	% Faculty	No.	%
Arts & Sciences	237	71	96	29	333	100
Education	36	68	17	32	53	100
Management	34	56	27	44	61	100
Nursing	21	34	41	66	62	100
Law	17	55	14	45	31	100
Social Work	13	72	5	28	18	100
	<u>356</u>	<u>64</u>	<u>195</u>	<u>32</u>	<u>551</u>	<u>100</u>

**FACULTY BY HIGHEST EARNED DEGREE AND RANK
1980-81**

	Professor	Associate	Assistant	Instructor	Total
--	-----------	-----------	-----------	------------	-------



**UNDERGRADUATE ENROLLMENT
BY SCHOOL**

INTERNATIONAL STUDENT ENROLLMENT
BY COUNTRY

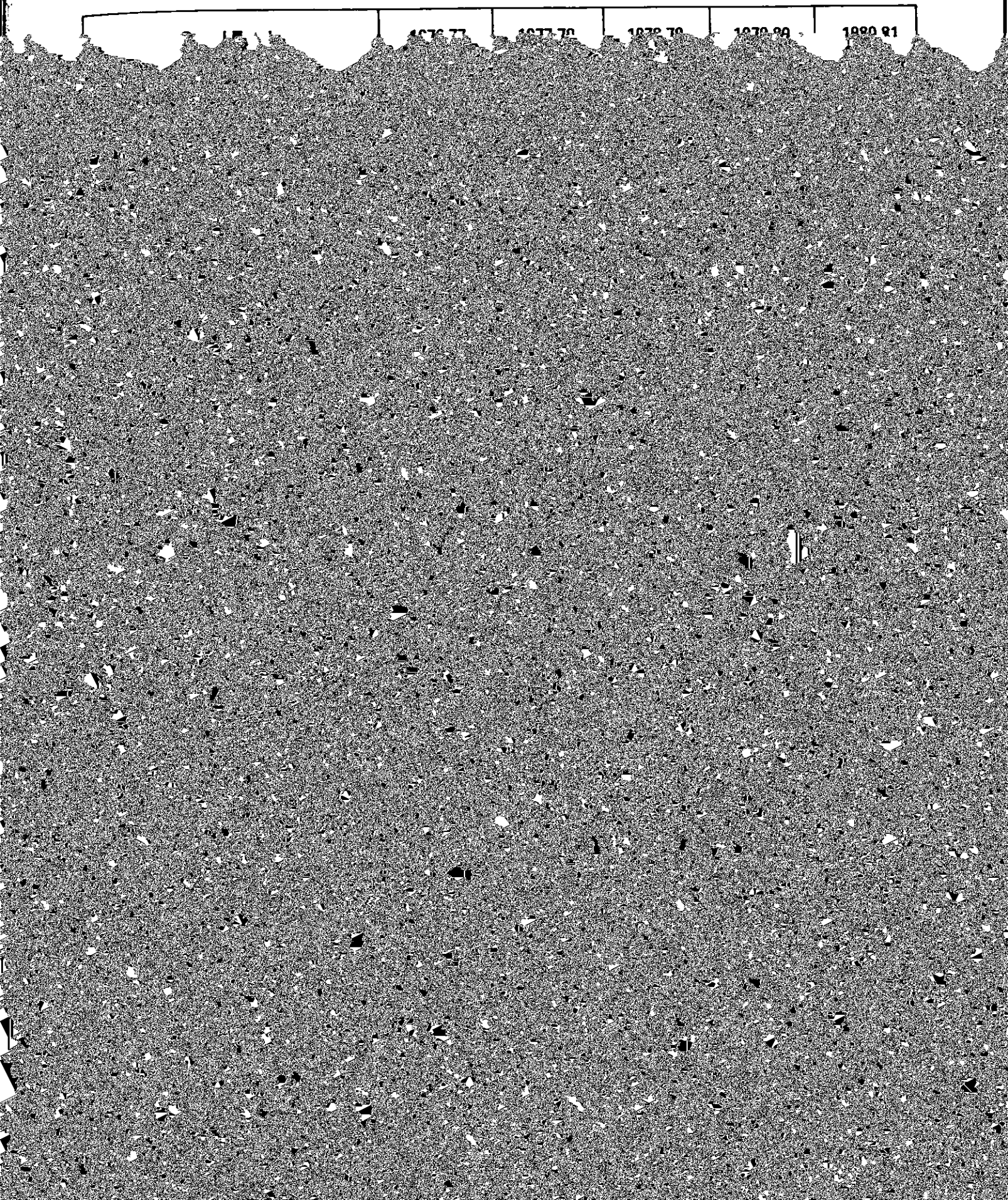
Algeria	1	Jamaica	2
Argentina	1	Japan	13
Australia	13	Kenya	2
Austria	1	Korea	4
Bangladesh	3	Lebanon	3
Barbados	1	Lesotho	1
Belgium	2	Liberia	3

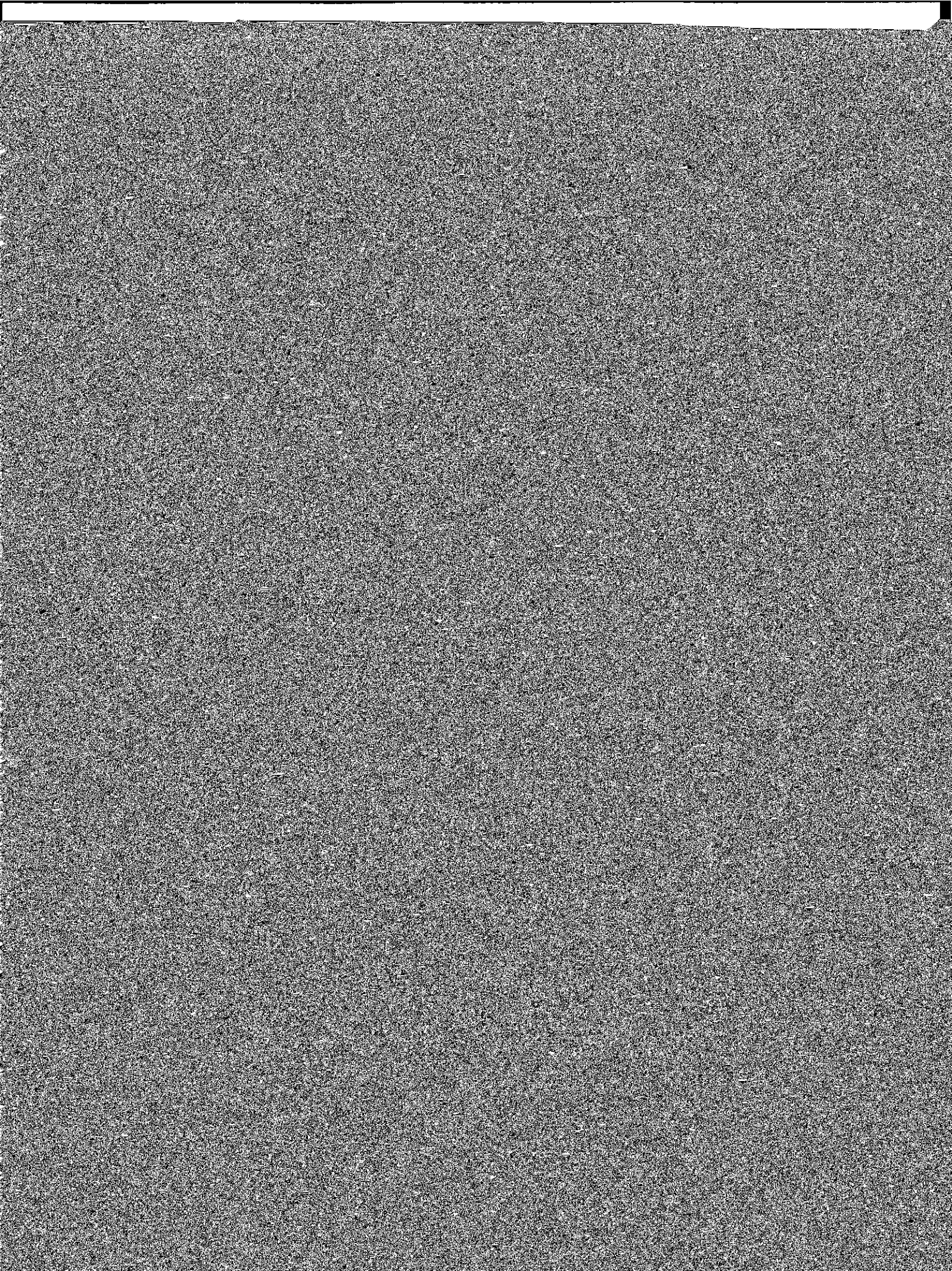
UNDERGRADUATE DEGREES CONFERRED*

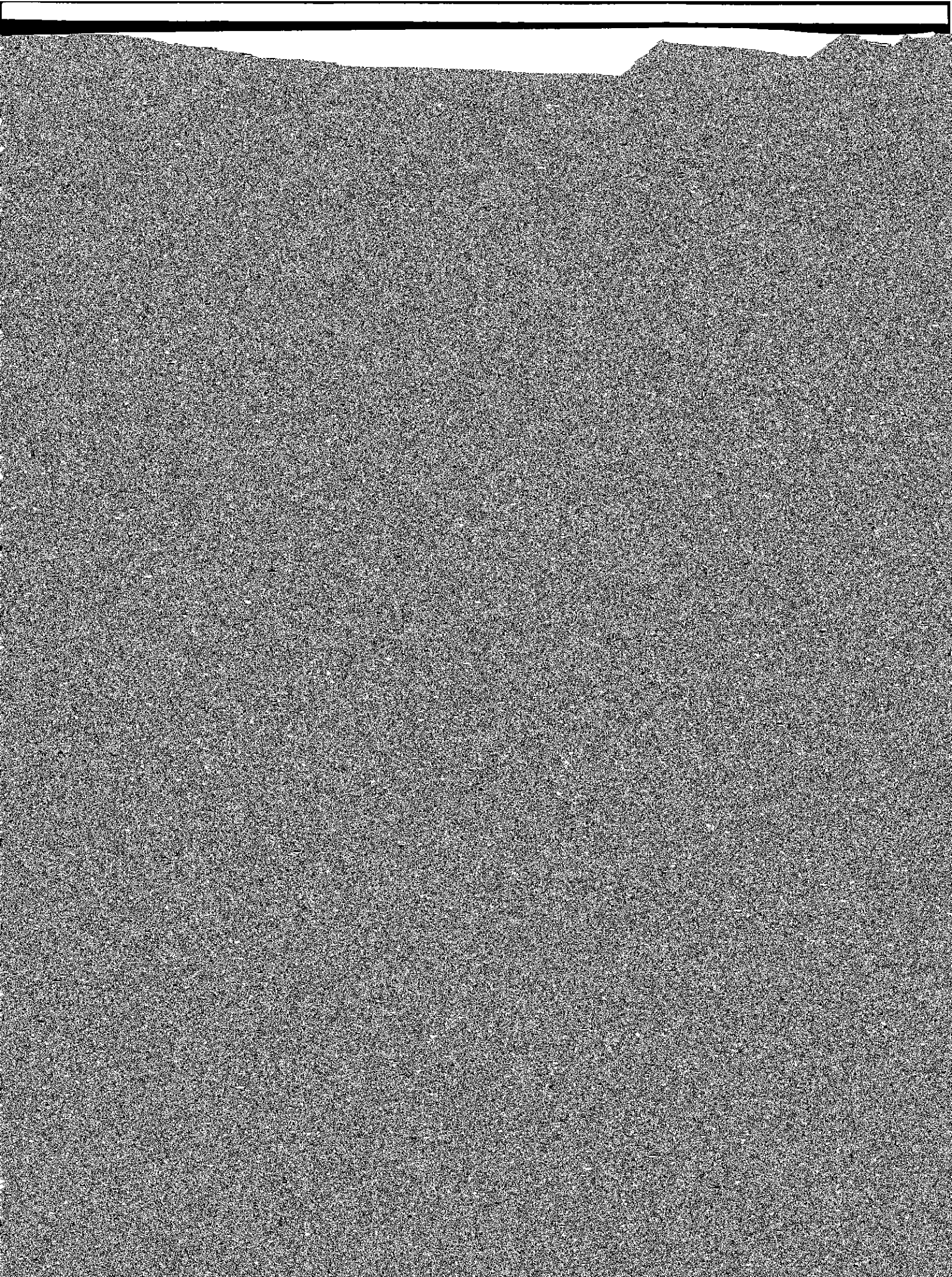
BY DEGREE AND NUMBER OF MAJORS

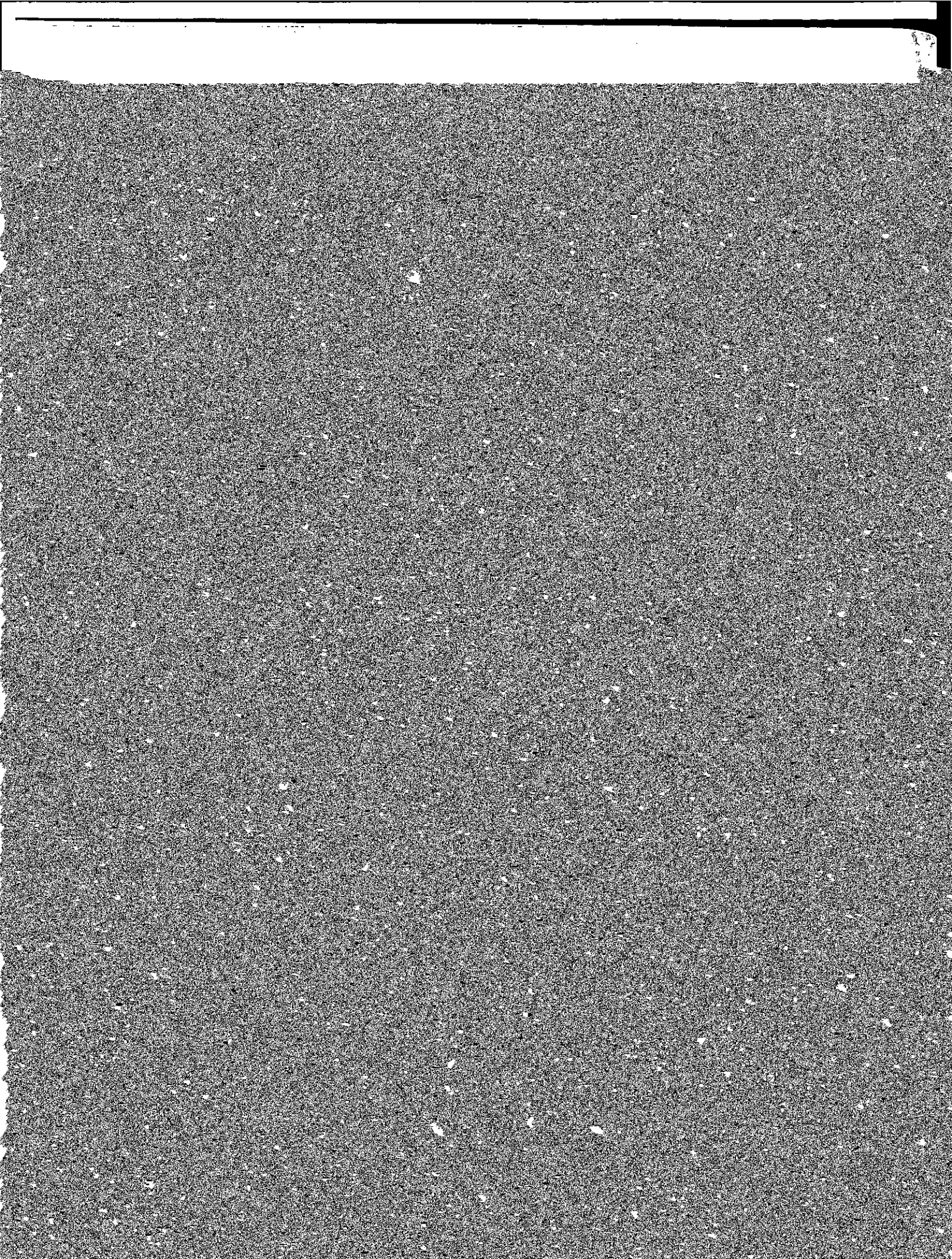
[The table content is obscured by a heavy gray noise pattern.]

**HEALTH SERVICES
NUMBER OF STUDENTS SERVED**





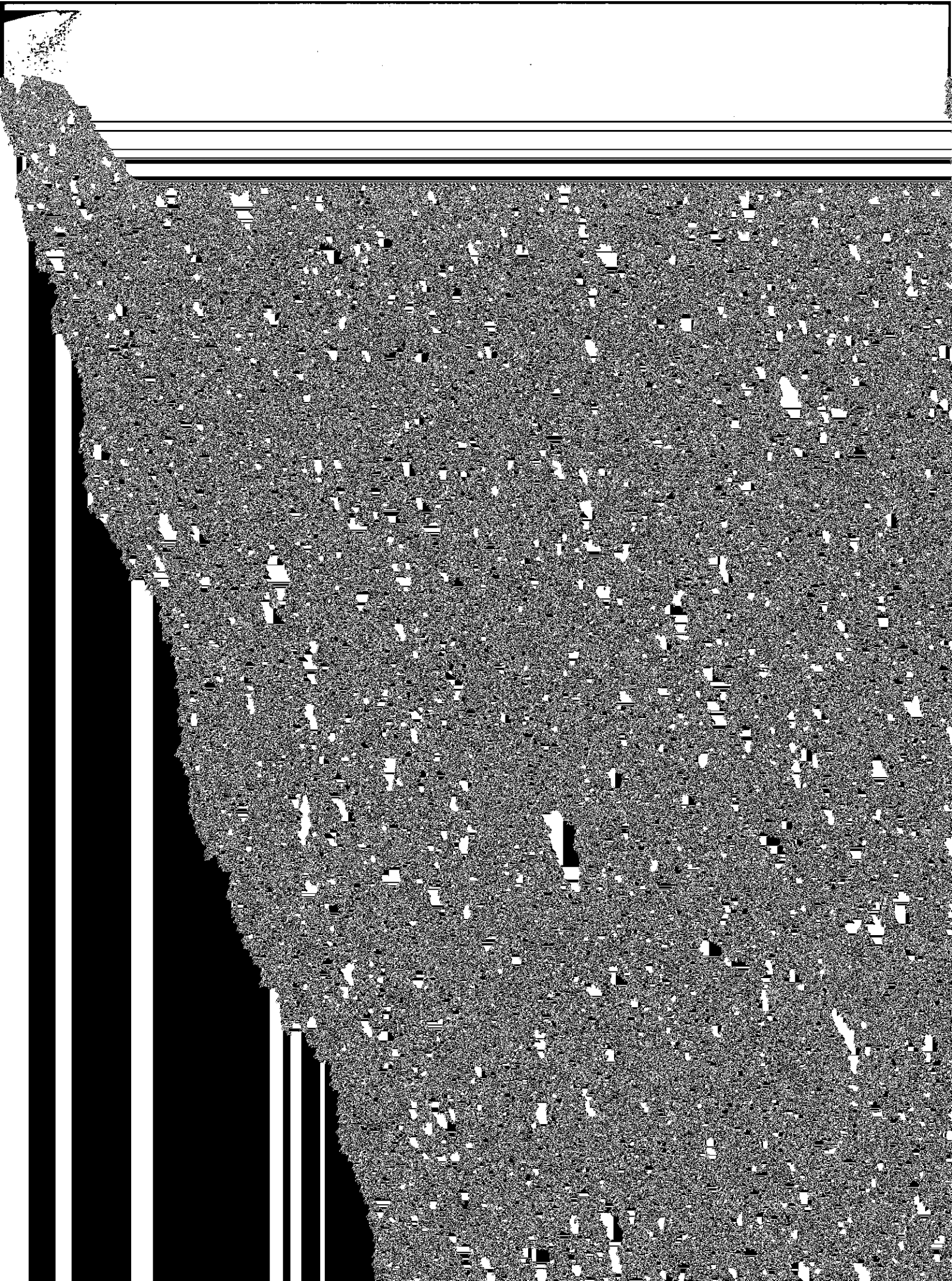




**ALUMNI DONORS BY PRIMARY SCHOOL AND CLASS
1980-1981**

Class	A.B.S.	Ed.	S.O.M.	S.O.N.	Evening College	Newton College	Grad. A.B.S.	Grad. S.O.M.	Social Work	Law	Weston Theo.	EX Alumni	Total Alumni Donors	Class
-------	--------	-----	--------	--------	--------------------	-------------------	-----------------	-----------------	----------------	-----	-----------------	--------------	---------------------------	-------



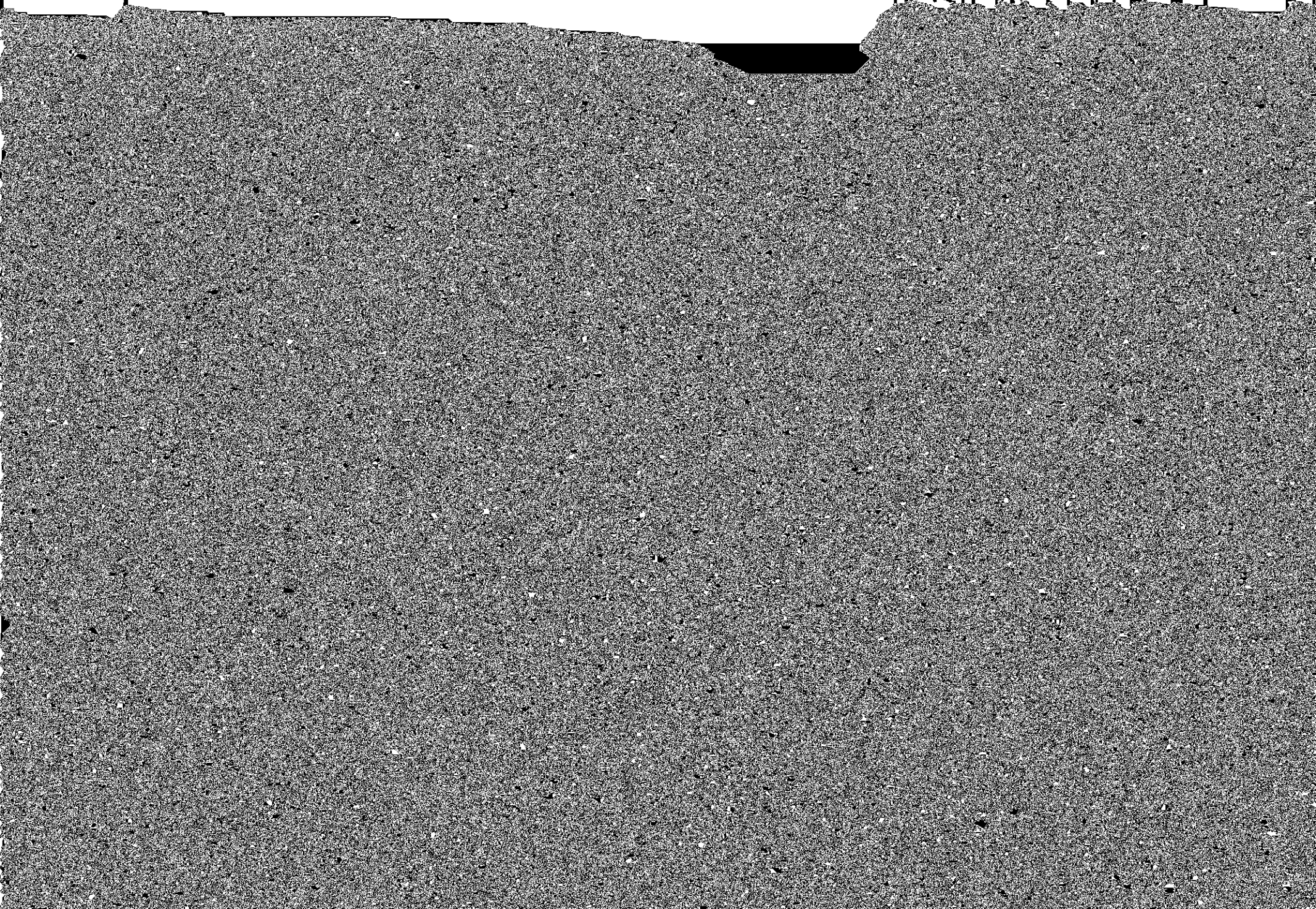


BOSTON COLLEGE
NEWTON CAMPUS



0 100 200 300



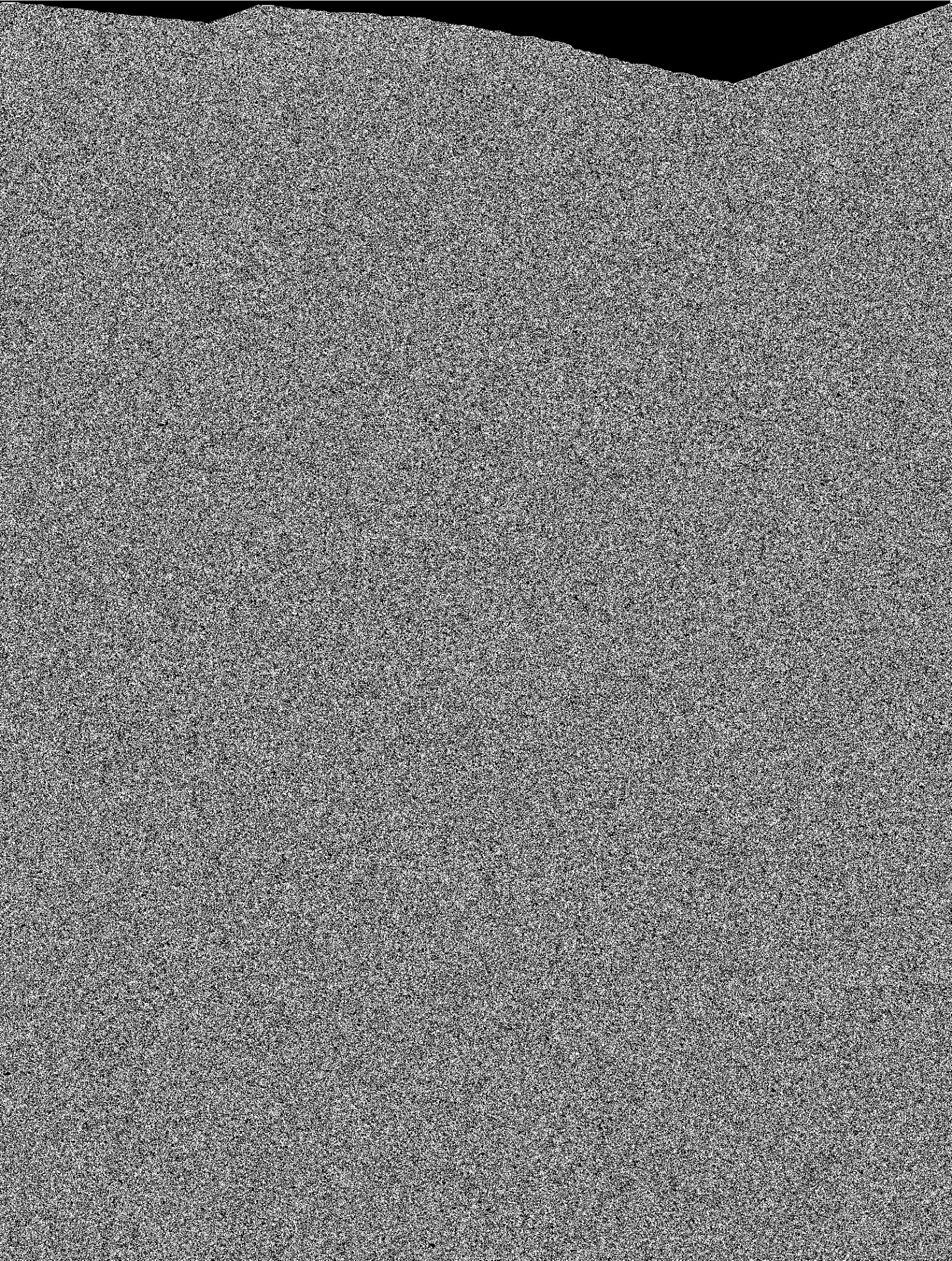


		Living Units	Students	Staff	Total
CHESTNUT HILL					
	Upper Campus				
	Ujave	40 Tudor Road	74	2	76
	Fenwick	46 Tudor Road	73	3	76
	Fitzpatrick	137 Hammond Street	80	3	83
	Gonzaga	149 Hammond Street	81	3	84
	Kostka	149 Hammond Street	52	2	54
	Loyola	42 Tudor Road	69	3	72
	Roncalli	182 Hammond Street	2	2	4
	Snaw	37 Beacon Street	5	98	103
	Townhouse	60 Tudor Road	76	150	226
	Welch	200 Hammond Street	72	138	210
	Williams	142 Hammond Street	40	78	118
	Xavier	44 Tudor Road	784	1,526	34
					1,560
LOWER CAMPUS					
	Edwards Hall	720 East Thorne Avenue	36	216	252
	Hillside A	100 Commonwealth Avenue	29	152	181
	Hillside B	100 Commonwealth Avenue	24	188	212
	Hillside C	190 Commonwealth Avenue			

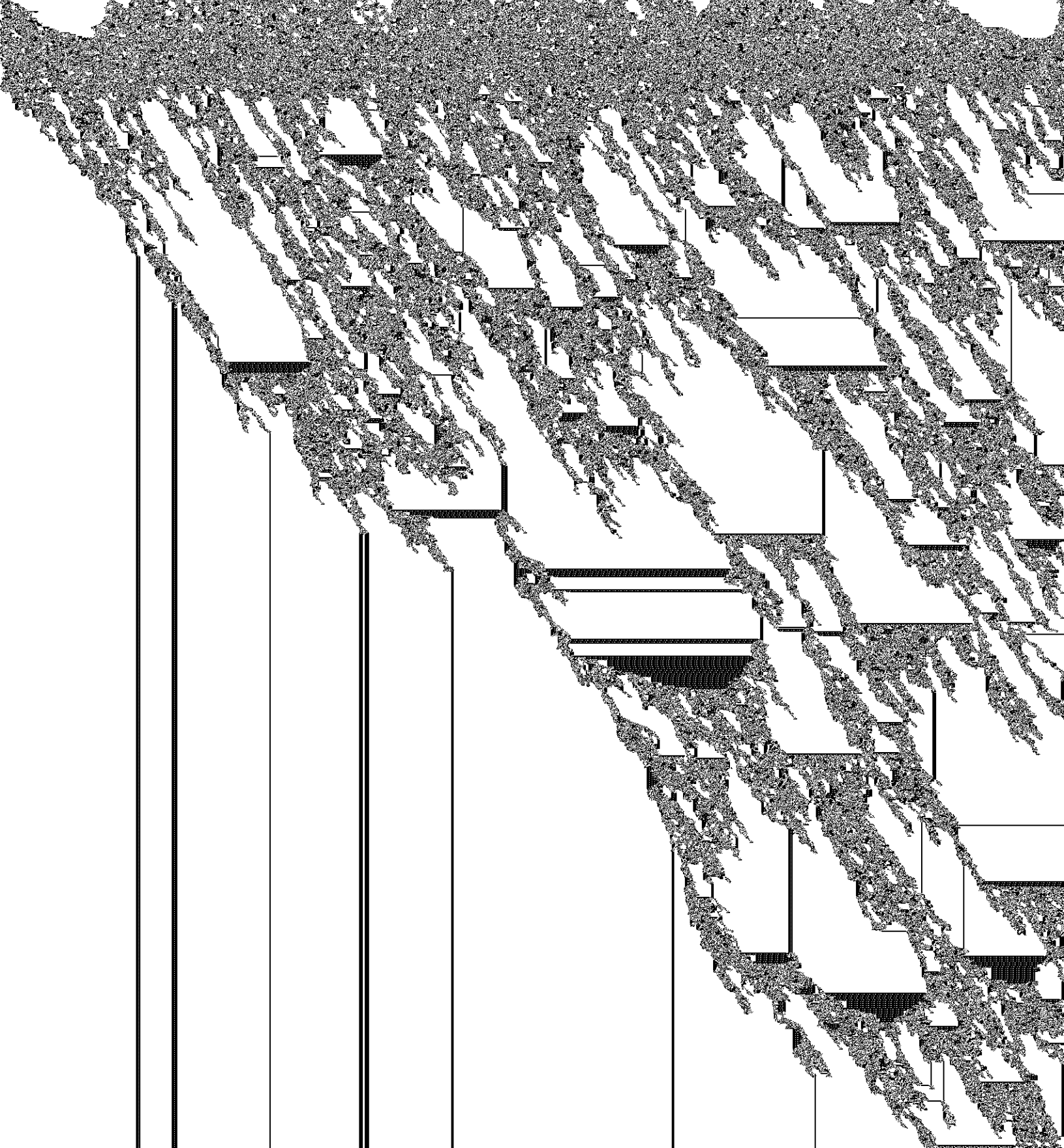
SUMMARY OF CONTRACT AND GRANT AWARDS*
JULY 1, 1980 — JUNE 30, 1981

No. of Awards

Award Total



ATHLETICS



**VARSITY HOCKEY SCHEDULE
1981-82**

Nov. 14	Salem State	Jan. 12	Providence
Nov. 20	Holy Cross	Jan. 16	at Cornell
Nov. 24	Princeton	Jan. 19	at Yale
Dec. 1	Brown	Jan. 22	RPI
Dec. 4	at St. Lawrence	Jan. 24	at Providence
Dec. 5	at Clarkson	Jan. 27	Dartmouth
Dec. 8	Maine	Feb. 1	at Beanpot Tournament
Dec. 10	at New Hampshire	Feb. 4	New Hampshire

NOTED

TYPES OF DEGREES CONFERRED AT BOSTON COLLEGE

