

BOSTON COLLEGE

THE UNIVERSITY OF THE SACRAMENT

THE UNIVERSITY OF THE SACRAMENT

THE UNIVERSITY OF THE SACRAMENT

THE UNIVERSITY OF THE SACRAMENT

THE UNIVERSITY OF THE SACRAMENT

THE UNIVERSITY OF THE SACRAMENT

THE UNIVERSITY OF THE SACRAMENT

THE UNIVERSITY OF THE SACRAMENT

THE UNIVERSITY OF THE SACRAMENT

THE UNIVERSITY OF THE SACRAMENT

THE UNIVERSITY OF THE SACRAMENT

THE UNIVERSITY OF THE SACRAMENT

THE UNIVERSITY OF THE SACRAMENT

Boston College Fact Book

Table of Contents

Page

Foreword
Table of Content

Boston College Then and Now
Boston College Profile

I. ADMINISTRATION AND FACULTY

Chart of Administration 2
Board of Trustees 4

Officers of the University 5

Deans 5

University Administrators 7

Department Chairmen

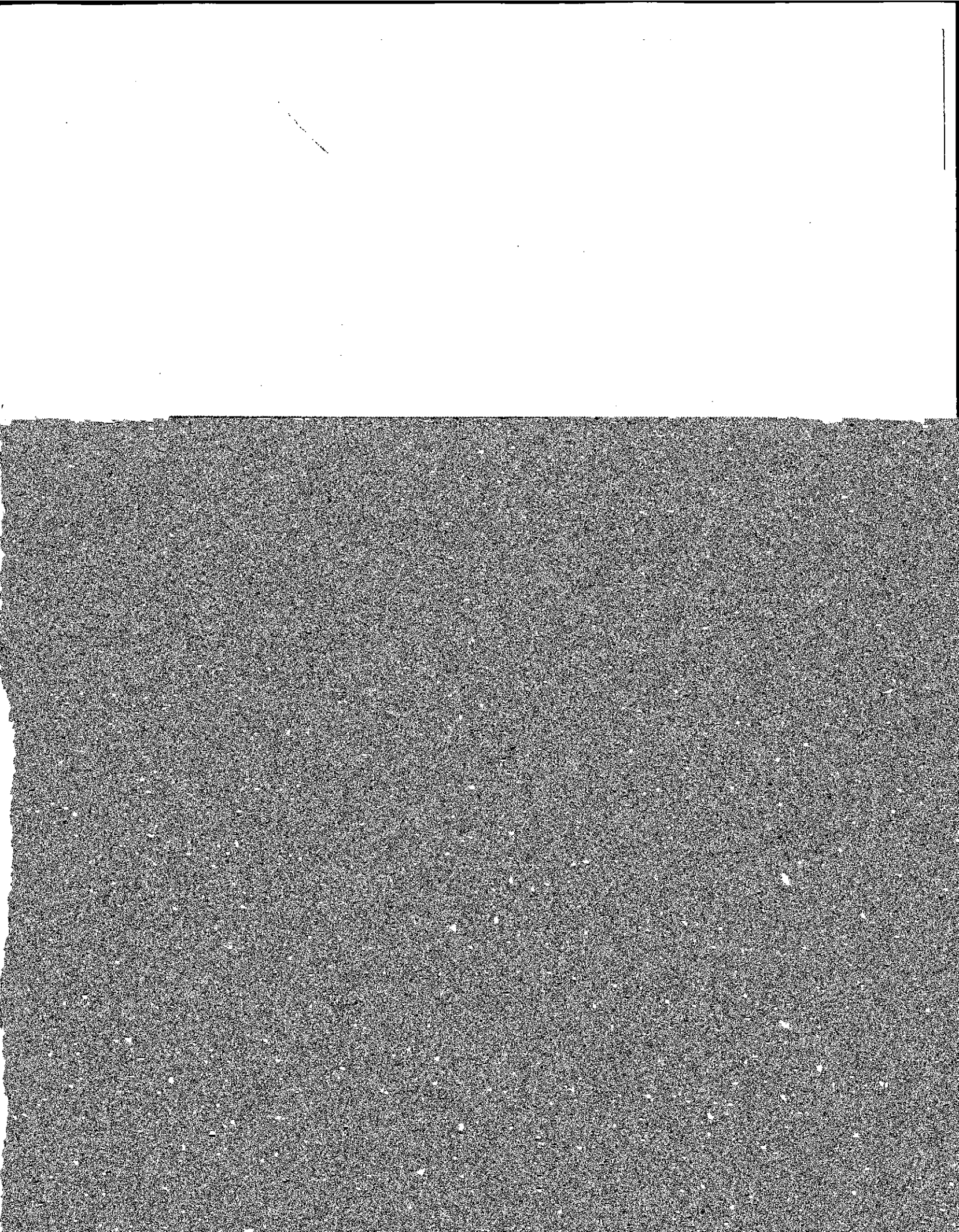
Professional, Administrative and Support Staff Personnel

Faculty

by School and Rank

by School and Sex

by School and Tenure Status

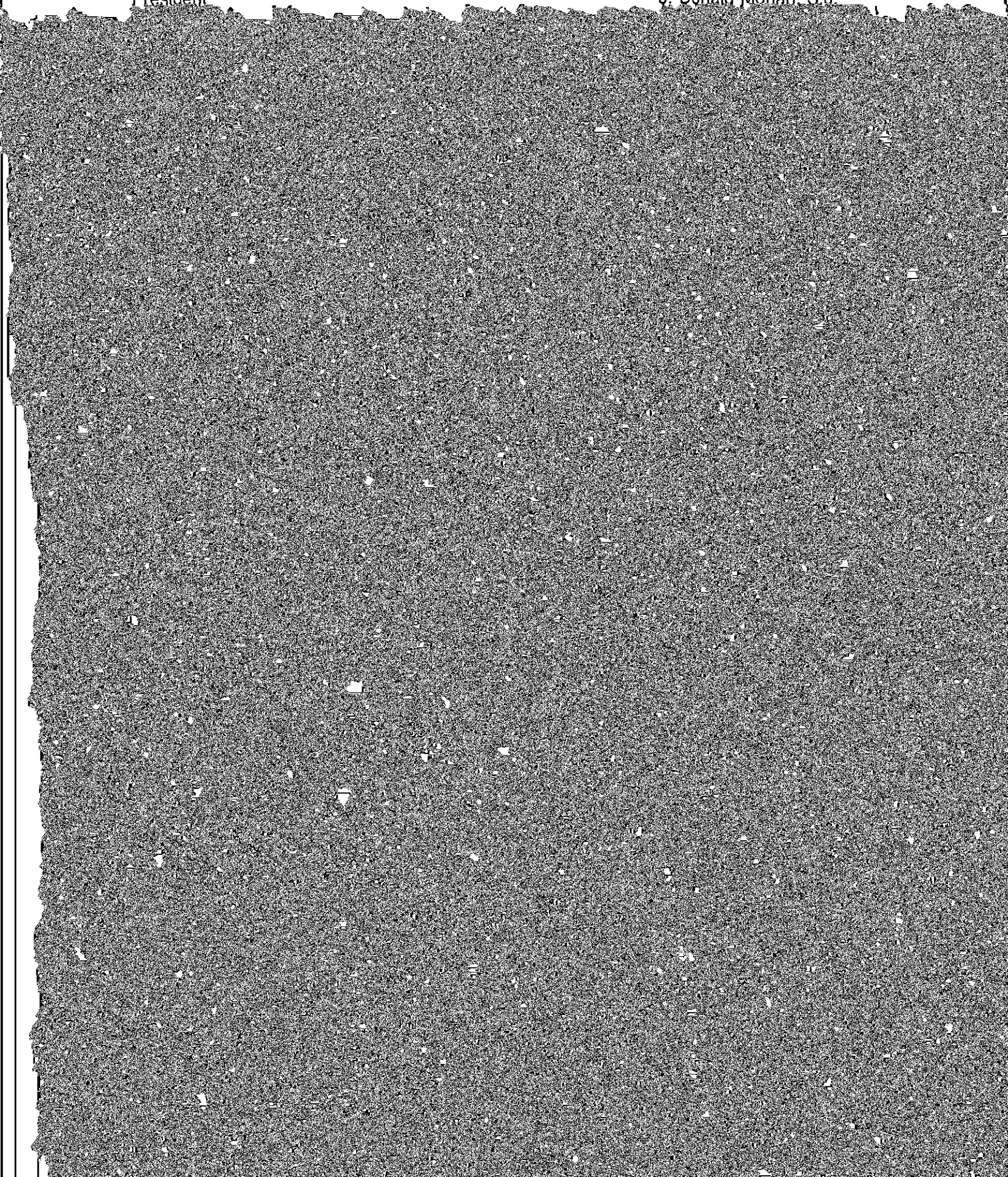


| | | |

**Officers of the University
Fall 1978**

President

J. Donald Monan, S. J.



**Faculty by School and Sex
1977-78**

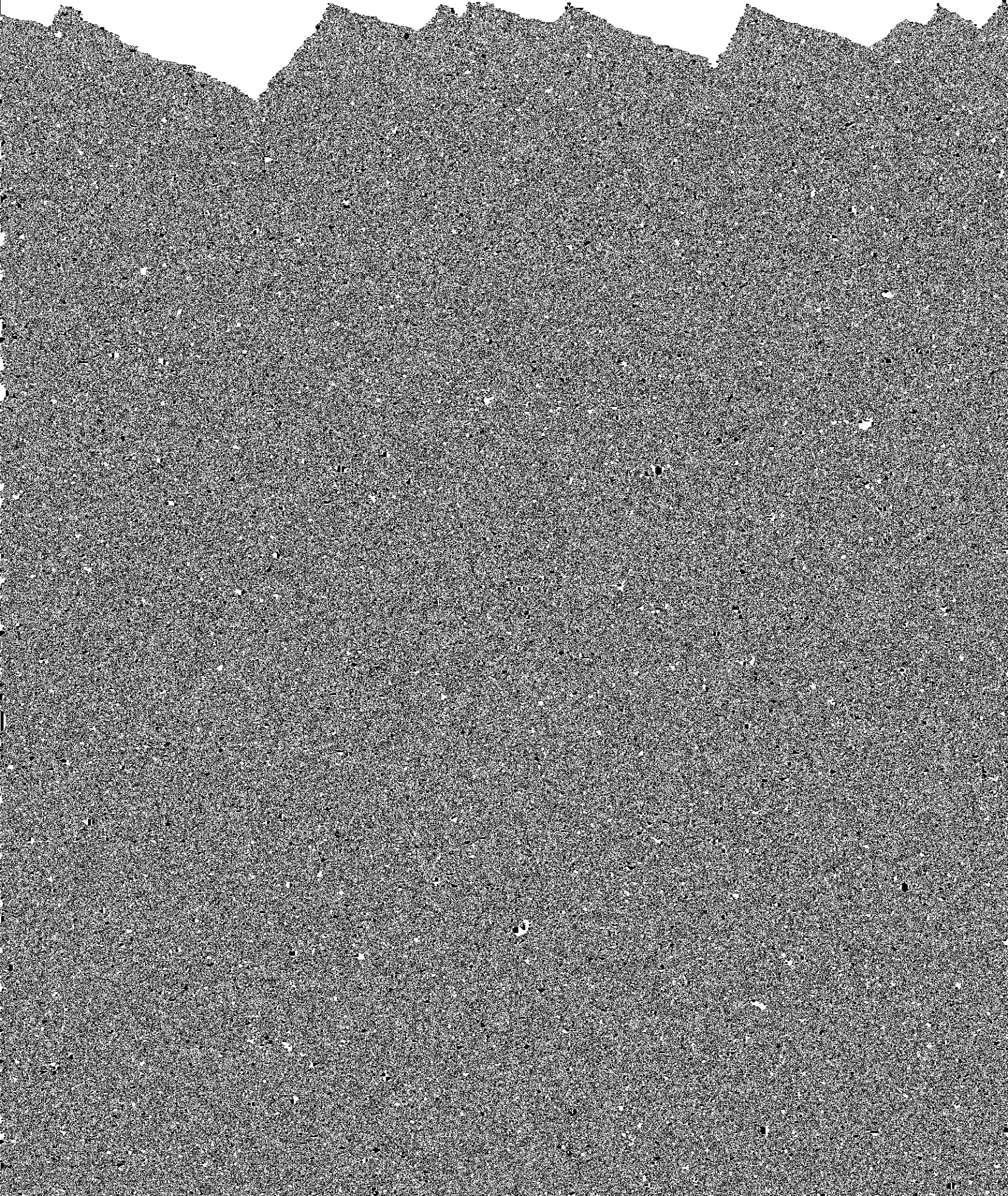
School	Women		Men		Total	
	No.	%	No.	%	No.	%
Arts & Sciences	48	36	280	69	328	60
Education*	15	11	41	10	56	10
Management	2	2	56	14	58	11
Nursing*	57	42	0	0	57	10
Law	4	3	20	5	24	5
Social Work	9	6	10	2	19	4
Total**	135	25	407	75	542	100

Source: Office of Dean of Faculties

**Faculty by School and Tenure Status
1977-78**

School	Tenured		Non-Tenured		Total	
	No.	%	No.	%	No.	%
Arts & Sciences	216	66	112	34	328	60
Education*	30	54	26	46	56	10
Management	2	2	56	41	58	11
Nursing*	57	42	0	0	57	10
Law	4	3	20	5	24	5
Social Work	9	6	10	2	19	4

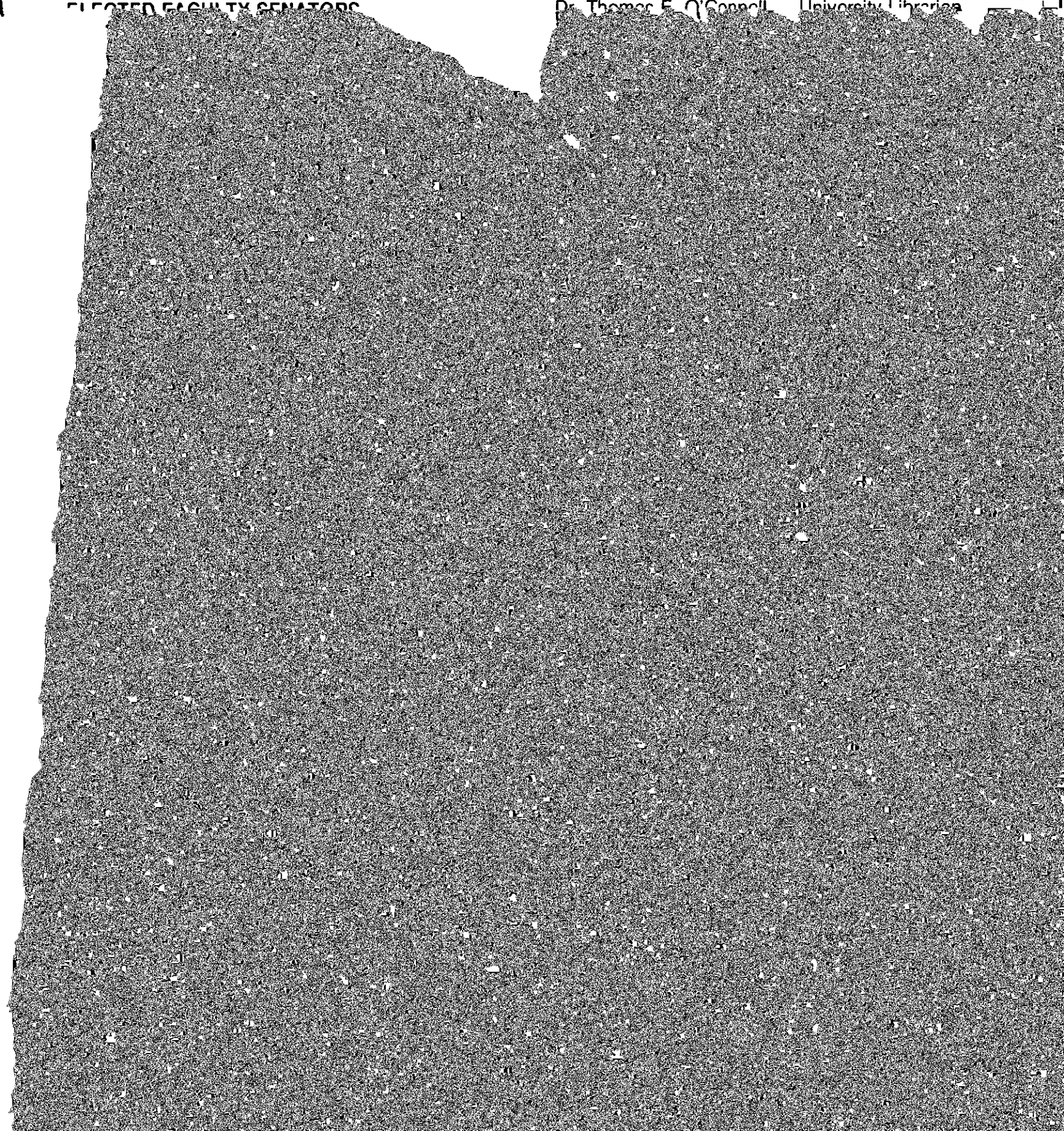
**Average Compensation by Rank
AAUP Category I
(9-month equivalent)**



University Academic Senate
Membership List 1977-1978

ELECTED FACULTY SENATORS

Dr. Thomas F. O'Connell, University Librarian



Freshman Applications And Enrollment (Full Time)

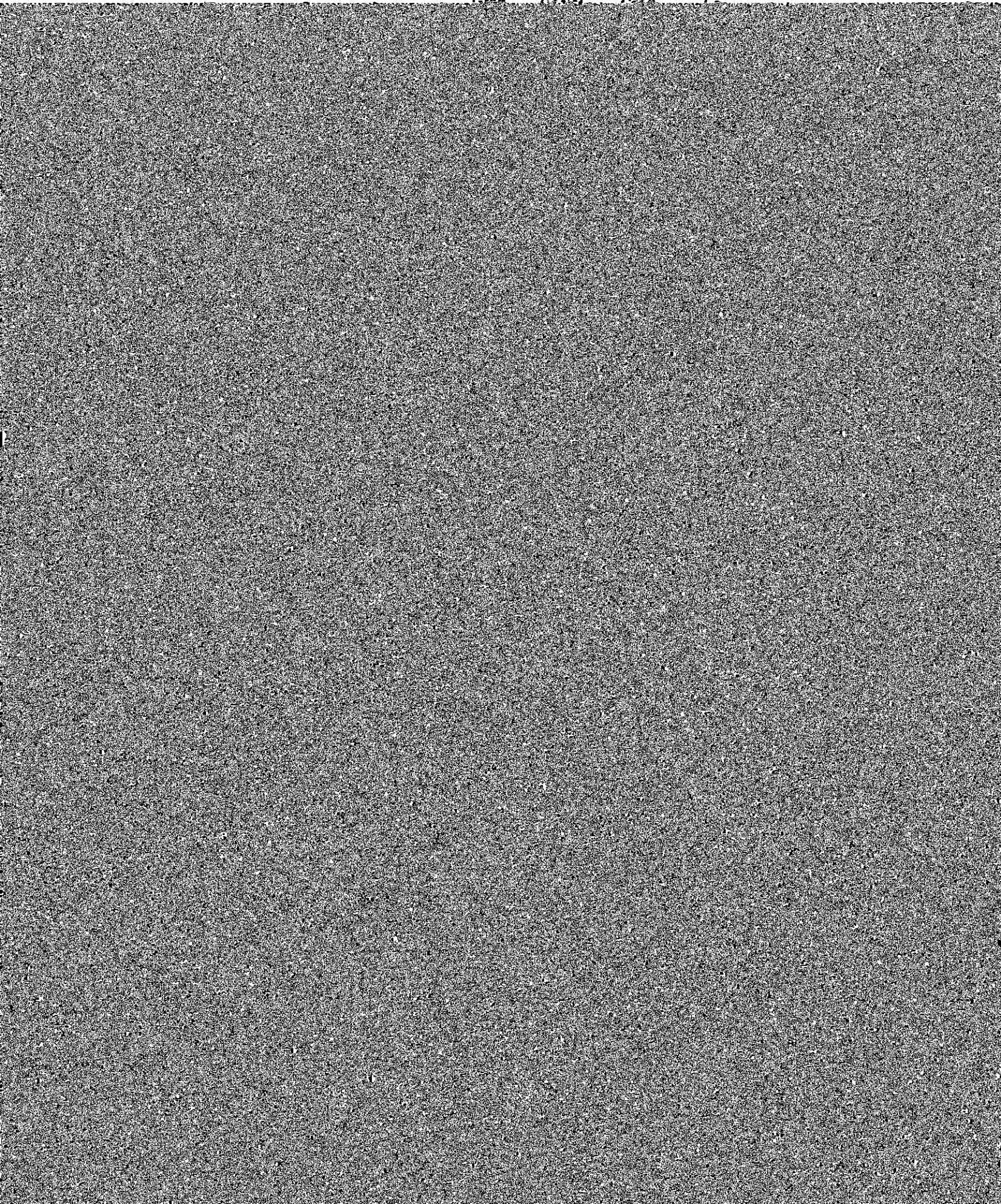
Fall	Applications	Enrollment		Total
		Men	Women	
1969	5,242	1,232	364	1,596
1970	6,605	1,402	685	2,087
1971	6,712	1,024	725	1,749
1972	7,286	1,253	976	2,229
1973	8,358	913	874	1,787
1974	8,377	1,144	1,008	2,152
1975	9,486	962	1,069	2,031
1976	10,848	1,041	1,091	2,132

SAT Averages by Class

Class	Verbal	Mathematical
1966	535	544
1967	544	549
1968	559	574
1969	567	578

**Geographic Distribution of Students
(Graduate and Undergraduate) Fall 1977***

Graduate Graduate Graduate



**New International Students Entering in Summer and
Fall 1977, and Spring 1978***

By Sex

Program	Men	Women	Total
Undergraduate	4	10	14
Graduate	32	27	59
Total	36	37	73

International Student Enrollment

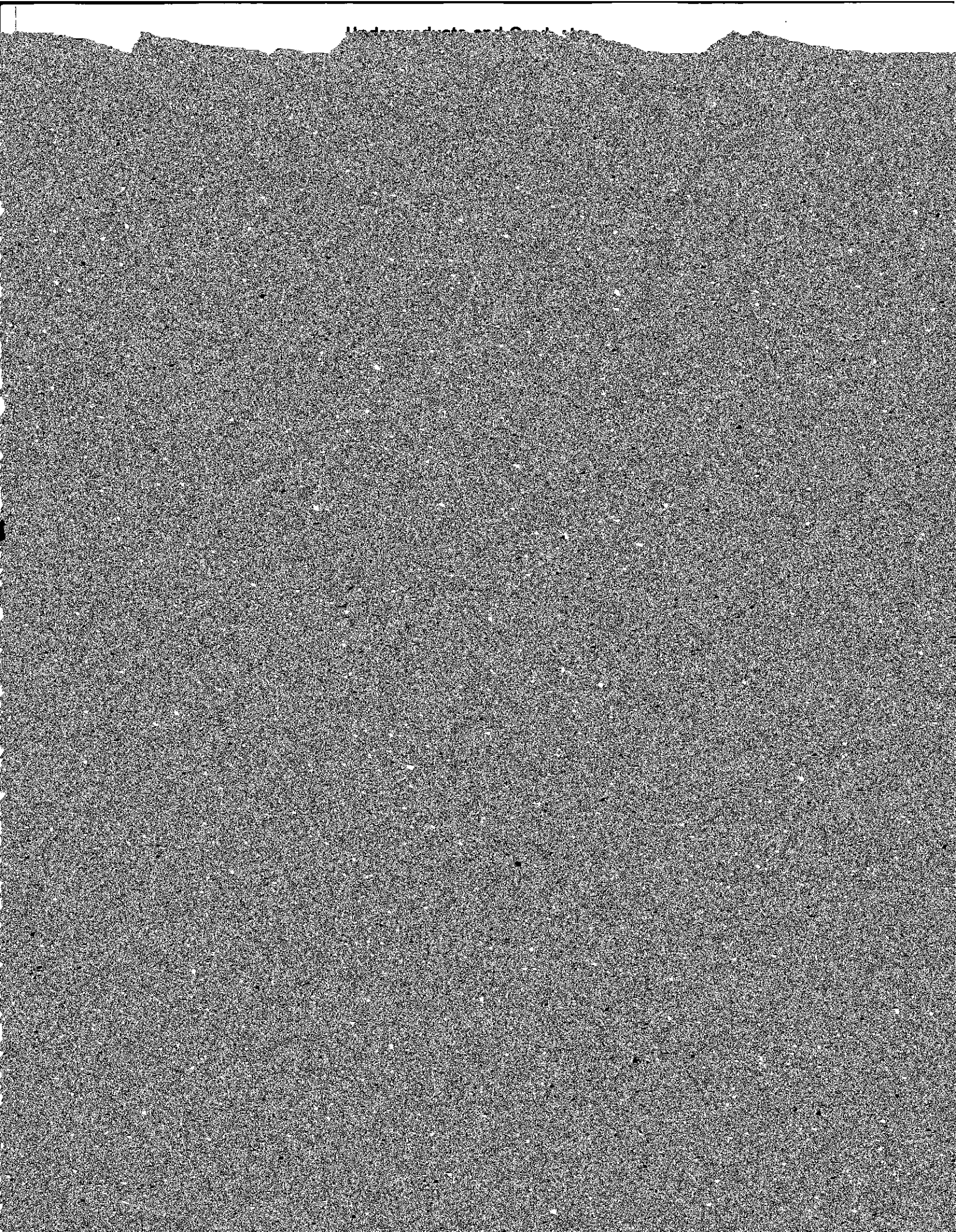
1977-78

By School

College of Arts & Sciences	40
School of Education	1
School of Nursing	1
School of Management	17
Graduate Arts & Sciences	100
Graduate School of Social Work	3
Graduate School of Management	17
Law School	2
Practical Training (Field Work)	10
Total	191

By Country

Country	Men	Women	Total	Country	Men	Women	Total
Algeria	1	2	3	Japan	5	5	10
Australia	6	4	10	Kenya	1	0	1
Austria	0	1	1	Lebanon	2	0	2
Bahamas	0	1	1	Lesotho	1	0	1
Bangladesh	1	1	2	Liberia	0	1	1
Bermuda	2	0	2	Libya	1	0	1
Brazil	1	2	3	Mexico	1	1	2
Canada	9	6	15	Netherlands	2	3	5
Chile	2	0	2	New Zealand	1	0	1
Colombia	2	1	3	Nicaragua	1	5	6
Dominica	1	0	1	Nigeria	3	1	4
Dominican Republic	0	1	1	Norway	1	0	1
Ecuador	3	0	3	Pakistan	0	1	1
Ethiopia	4	0	4	Panama	1	1	2
Finland	0	1	1	Peru	2	2	4
France	4	0	4	Philippines	3	2	5
					0	0	1



**Undergraduate and Graduate Degrees Conferred*
By Degree and by Sex**

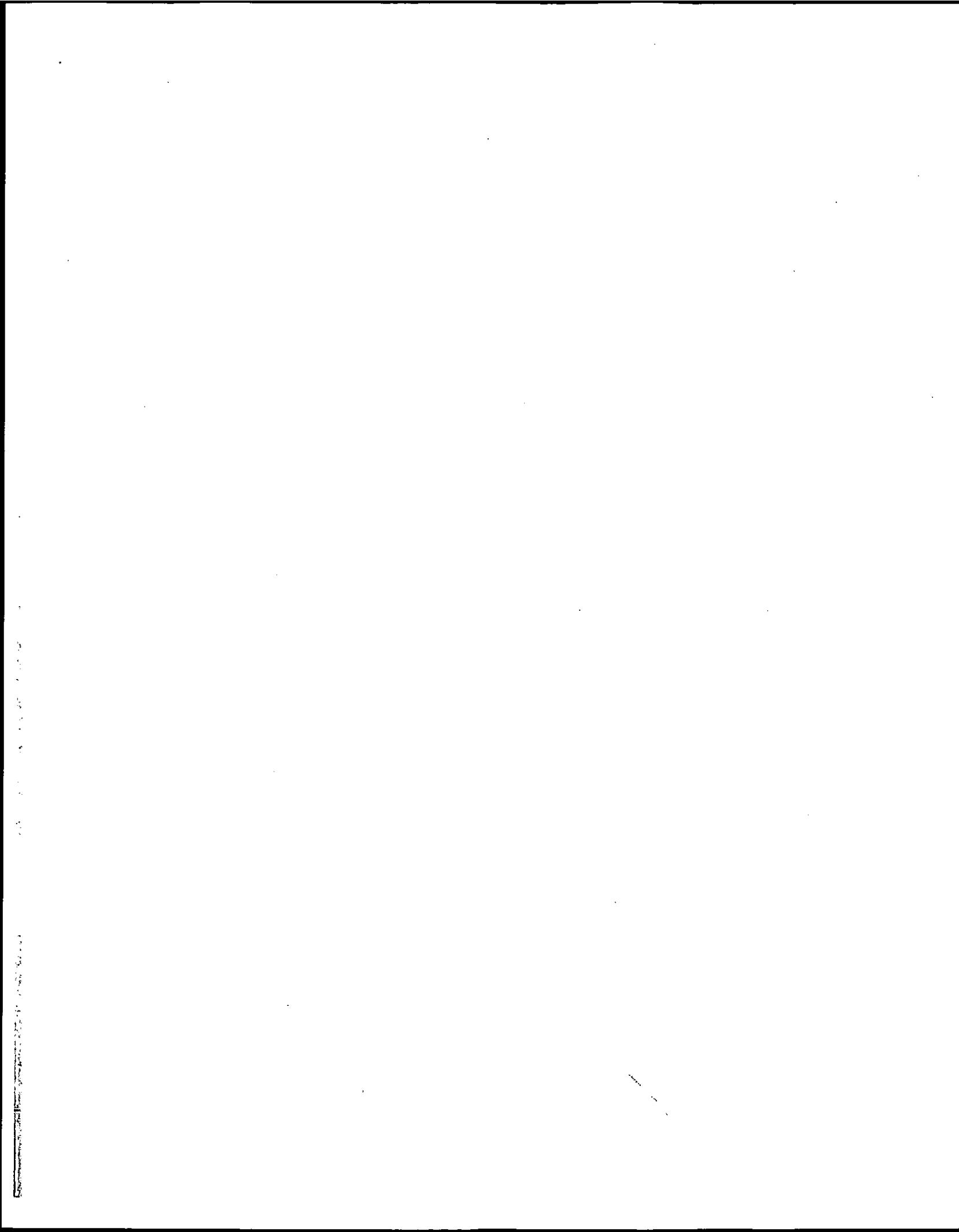
1977-78

Boston College Alumni Clubs

Buffalo	Mid-Hudson
Cape Cod	Minnesota
Central New York	New Hampshire
Chicago	New Jersey
Cincinnati	New Orleans
Cleveland	North Shore
Denver	Northern California (San Francisco)
Detroit	Philadelphia

**Volume Acquisitions
(all libraries)**

Year	Number
1969-70	34,206
1970-71	36,262
1971-72	34,758
1972-73	40,835



Community Use Of Boston College

ACADEMIC CALENDAR

First Semester

1978-79

1979-80

Sept. 25

Freshman Orientation

Sept. 24

